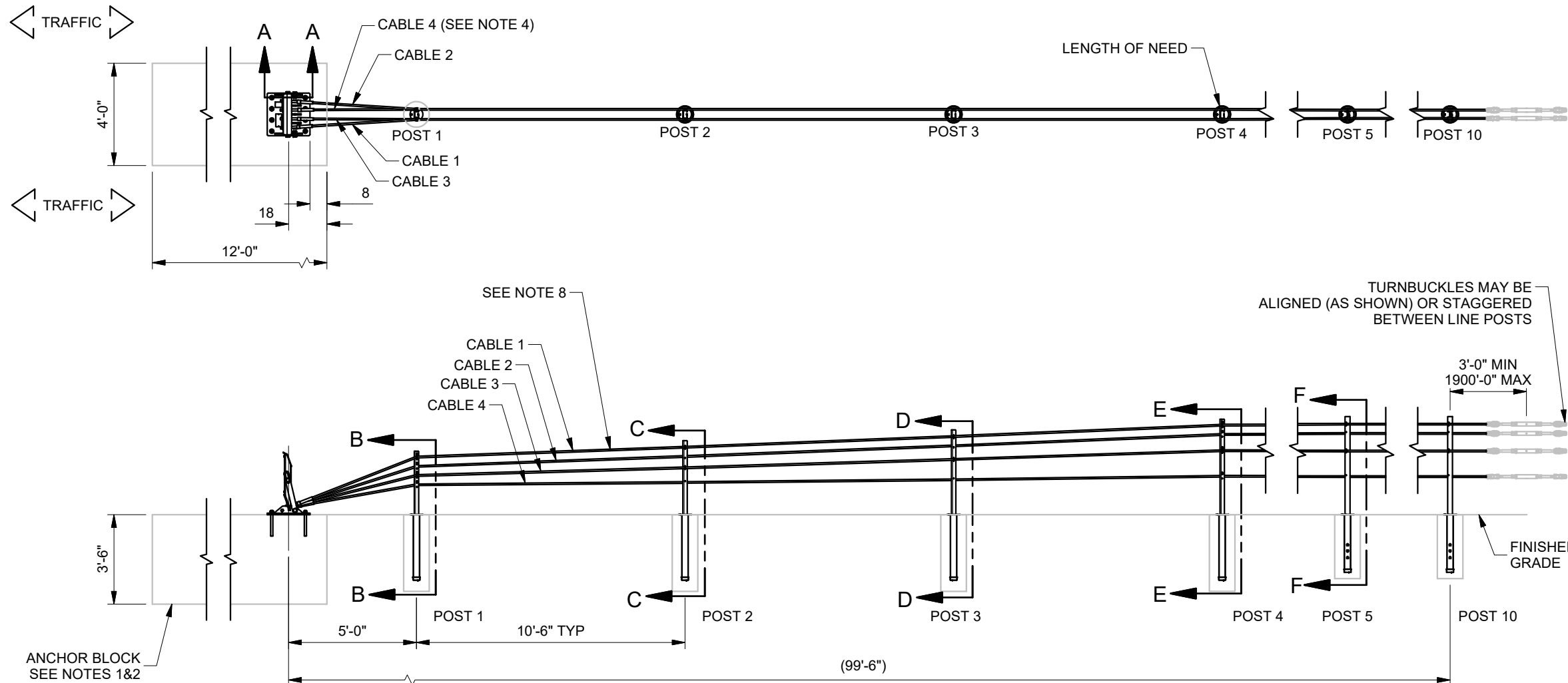


OPTIONAL COMPONENTS - PER PROJECT SPECIFICATION		
PART NO.	DESCRIPTION	QTY
005633G	CASS TRNBCKL STUD ASSY 1"	4
005836B	CASS #3 REBAR 8" OD	10
005910G	CASS STUD CBL ASSY 1" RT	4
119672G	CET CBL 105', R.H.T.,ASSY	4

DELINEATION OPTIONS - UPPER ANCHOR		
PART NO.	DESCRIPTION	QTY
003177B	REFL SHT,18X18,Y/B	1
211297B	TAPE,REFL,DG3,12,YLW	3
211299B	TAPE,REFL.,DG3,24,YELLOW	2

DELINEATION OPTIONS - POSTS 2, 4, 6, 8, & 10		
PART NO.	DESCRIPTION	QTY
005589B	REFL SHT,1 7/8X3 1/4,WHITE	5
005590B	REFL SHT,1 7/8X3 1/4,YELLOW	5


COMPONENTS LIST		
PART NO.	DESCRIPTION	QTY.
033588G	CASS SLV-STD 30.75 11GA.	4
034038G	CASS SLV S3X2'3 11GA	6
131665B	CET ANCHOR,LOWER,W/DECAL	1
131670G	CET ANCHOR,UPPER	1
131671G	CET U-SHAPED POST 1,60 1/2	1
131672G	CET U-SHAPED POST 2,65 1/2	1
131673G	CET U-SHAPED POST 3,70 1/2	1
131674G	CET U-SHAPED POST 4,75 1/2	1
131675G	CET POST 5-10,S3X5.7,SYT	6
131677B	CET REFL SHT PNL,18X18	1
131678G	CET ANCHOR LINK	2
HARDWARE BUCKET 119831B		
003240G	WASHER,FLAT,5/16 W,TY A,G	4
003245G	NUT,HX,5/16,A563,G	40
003914G	BOLT,HX,1X3 1/2,F3125,G	2
004225G	CABLE HOOK,SHLDR,5/16,A307,G	32
004486G	BOLT,HX,1X5,F3125,G	2
004902G	WASHER,FLAT,1X2,F436,G	10
004903G	NUT,HX,1,A194 2H,G	20
005823B	CASS,SLEEVE COVER,C POST	4
005825G	CABLE HOOK,LOCK,5/16,A307,G	8
005833B	CASS,SLVCVRBTM,5X3,C	4
005837B	CASS,SLEEVE COVER,BOTTOM,4X3	6
005839B	CASS,SLEEVE COVER,S3 POST	6
006401G	NUT,HX,1/4,A563	2
116884G	SCREW,HWH,#12X1,SELF TAPPING,P	8
118352G	ROD,THREADED,1X12,B7,G	8
118710B	ADHESIVE,HY200,330,HILTI	6
119824G	BOLT,HX,1/4X2,AT,A307	2
119836B	CET/S3 ASSEMBLY MANUAL	1
131676G	CET CABLE WASHER	4

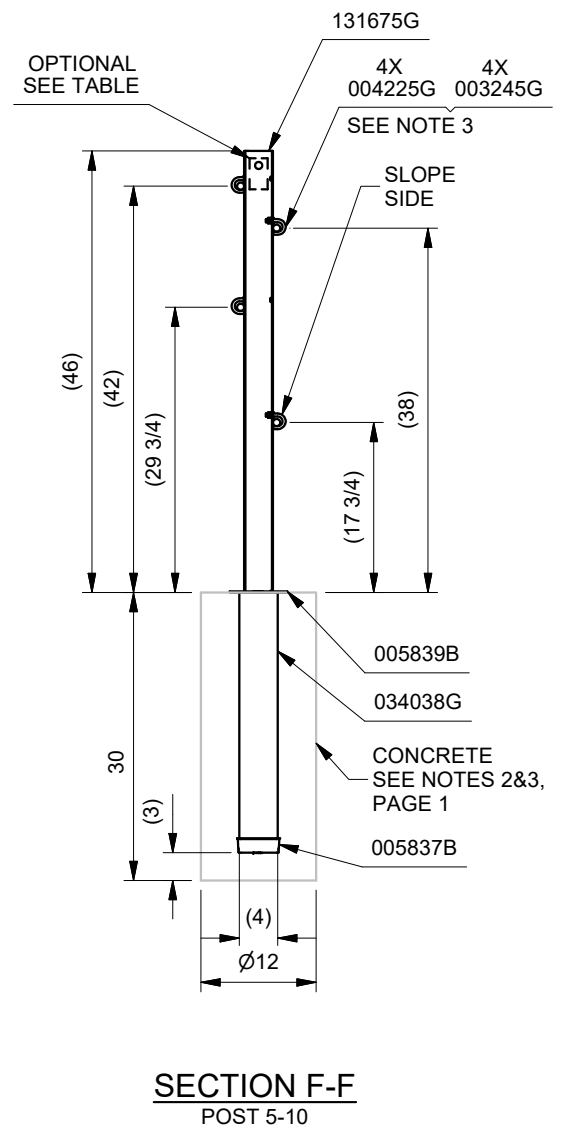
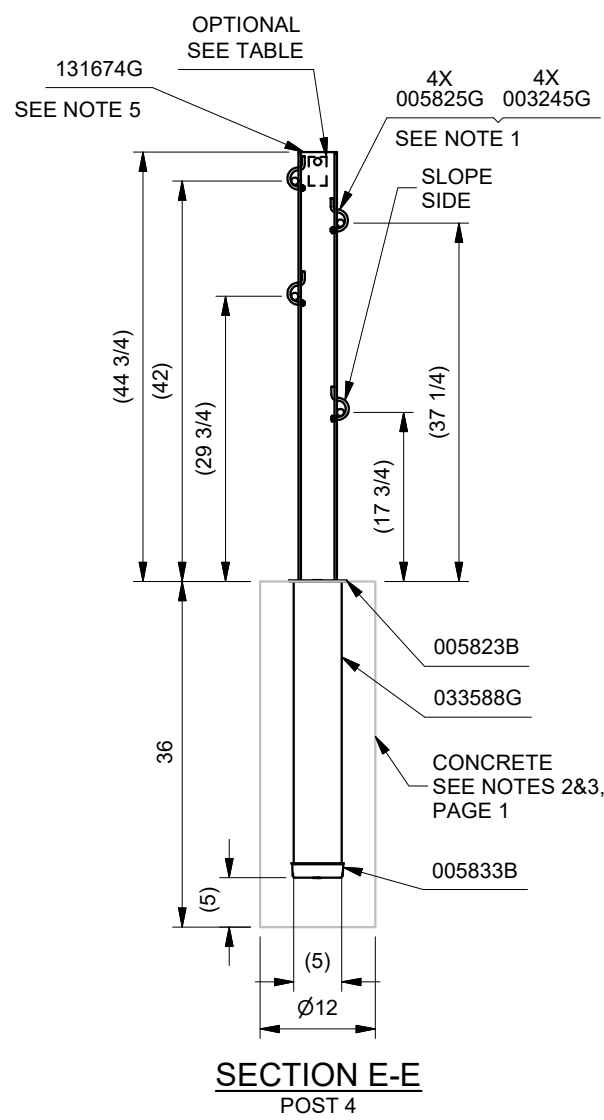
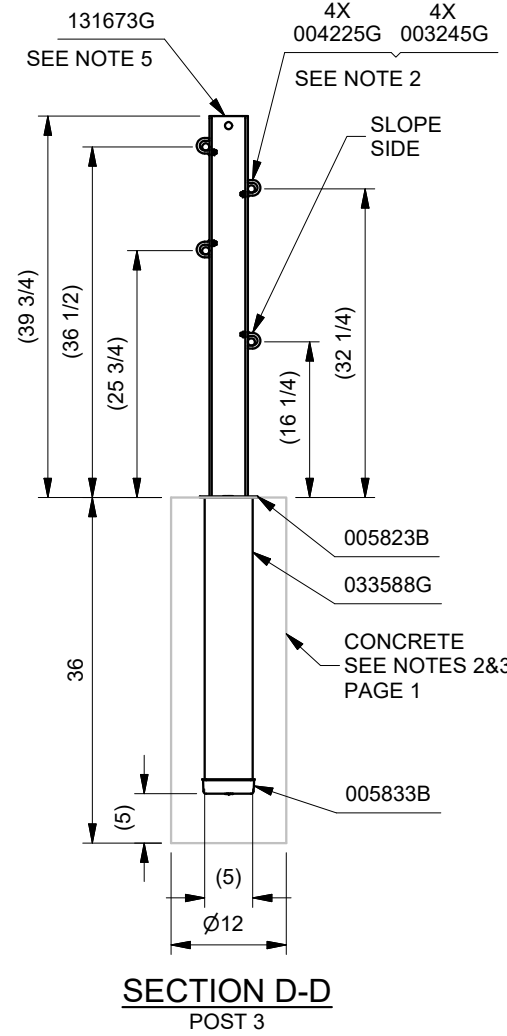
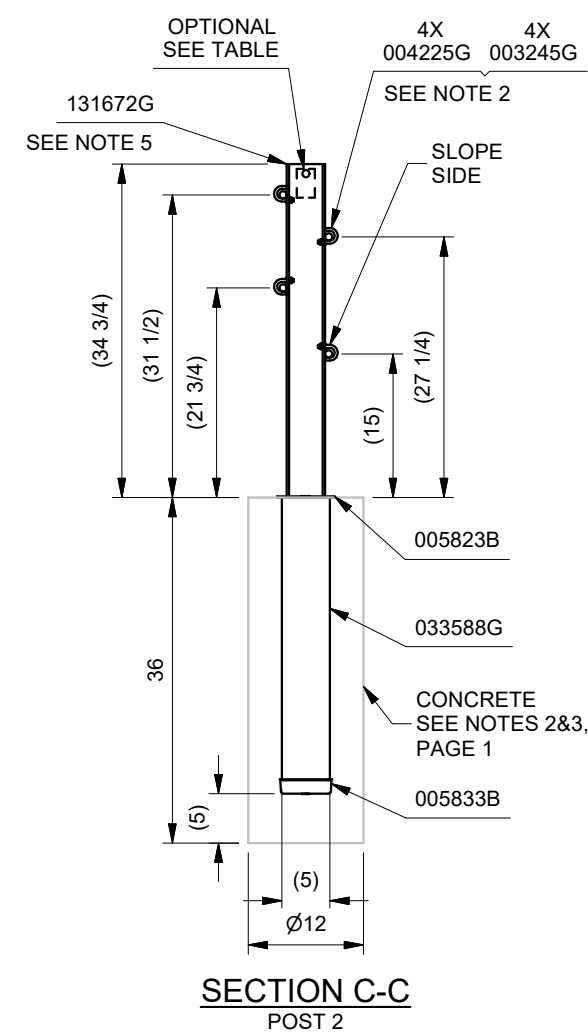
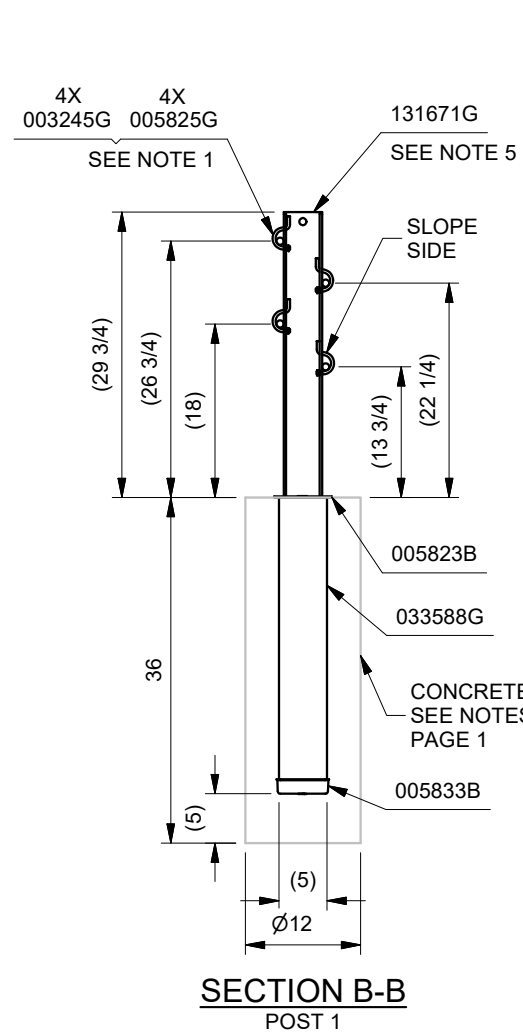
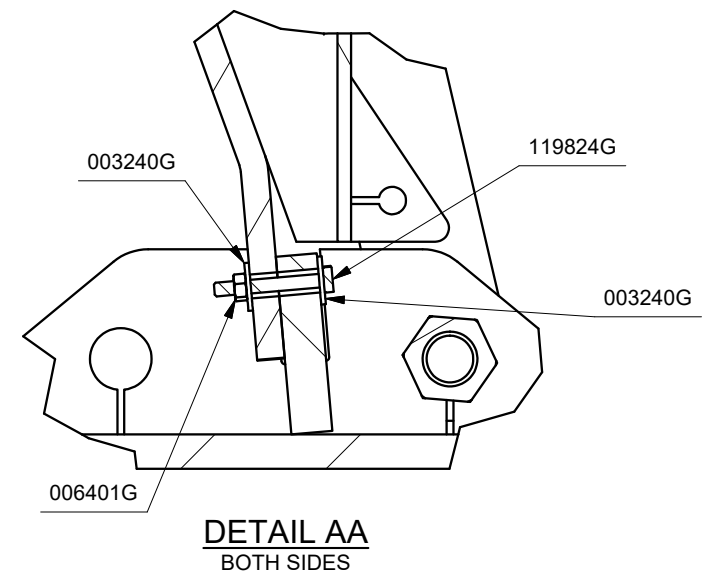
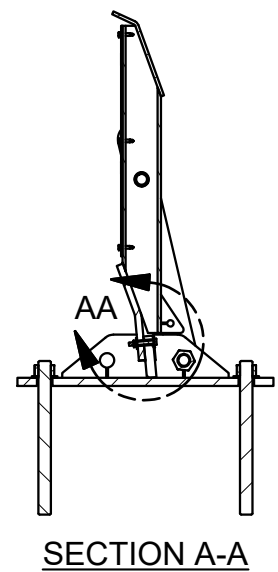
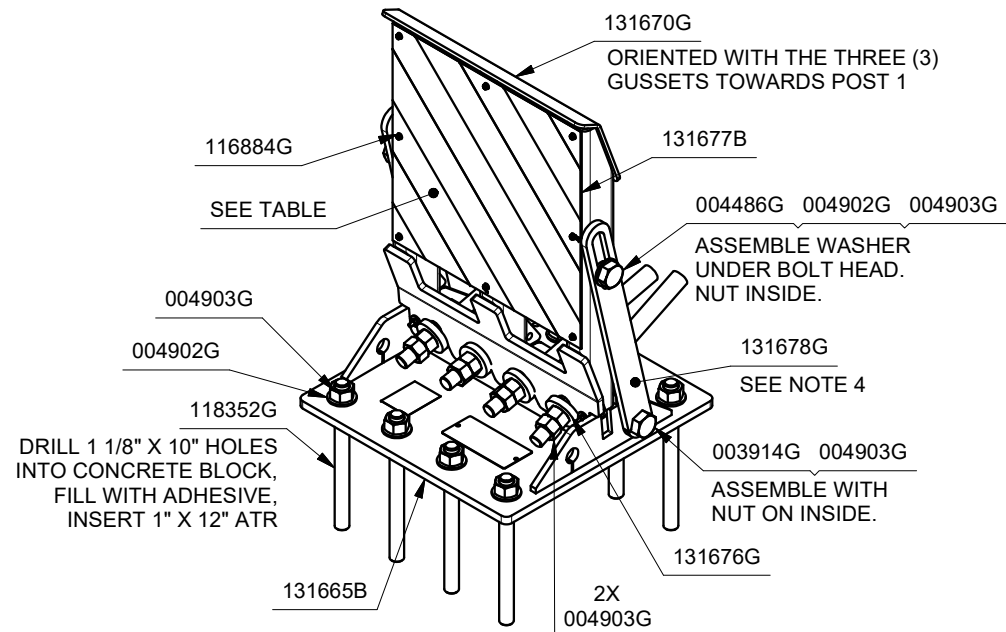


APPROACH INSTALLATION: LENGTH ON NEED: 36'-6" (AT POST #4)
DEPARTURE INSTALLATION: LENGTH ON NEED: 57'-6" (AT POST #6)

- NOTES:
- ANCHOR BLOCK SHALL BE 3000 psi MIN CONCRETE REINFORCED WITH SPECIFIED MACRO SYNTHETIC FIBER DOSED AT 4 lb/yd. IF MACRO SYNTHETIC FIBERS ARE NOT UTILIZED, SEE MANUAL (119836B) FOR OTHER OPTIONS.
 - REMOVE AIR POCKETS FROM CONCRETE, CONCRETE MUST BE CONSOLIDATED. THE USE OF A VIBRATORY DEVICE SUCH AS A "STINGER" IS RECOMMENDED.
 - POST SOCKET FOOTING SHALL BE 3000 psi MIN CONCRETE REINFORCED WITH MACRO SYNTHETIC FIBER DOSED AT 4 lb/yd. IF MACRO SYNTHETIC FIBERS ARE NOT UTILIZED, A Ø8" #3 REBAR RING (005836B) SHALL BE PLACED 3" (+1",-0") FROM THE TOP OF THE POST SOCKET FOOTING.
 - CABLE 4 (BOTTOM CABLE) SHALL BE INSTALLED ON THE DOWN SLOPE SIDE.
 - CET® ANCHOR ASSEMBLY SHALL UTILIZE 1" CABLE FITTINGS ONLY.
 - CABLE HEIGHT TOLERANCE IS ±1" FROM FINISHED GRADE.
 - SEE MANUAL (119836B) FOR ADDITIONAL DETAILS, TO INCLUDE MACRO SYNTHETIC FIBER SPECIFICATION, TENSIONING, OTHER FOUNDATION OPTIONS AND GRADING.
 - Ø3/4, 3X7, AASHTO M 30 OR ASTM A741, TYPE 1, CLASS A, PRE-STRETCHED WIRE ROPE REQUIRED.

DRAWN: M. LOBERG	DATE: 3/21/2025	UNLESS OTHERWISE SPECIFIED, DIMENSIONS ARE IN FEET-INCHES ACCORDING TO ASME Y14.5-2018 AND QMS-SE-003				
CHECKED: A. BASSI	DATE: 4/14/2025	DO NOT SCALE DRAWING				
REVISION DESCRIPTION	ECO	DATE	REV	BY	CHK	
INITIAL RELEASE	9819	-	-	-	-	
CET WAS TRADEMARK ALL LOCATIONS, RMOV LON DIM, ADD LON INSTALL LENGTH	10350	04/06/26	A	ML	ASB	

CET® CASS® END TERMINAL P/N 502380		 VALTIR
DRAWING: SS 2380	REV: A	
SHEET: 1 of 2		SHEET: 1 of 2



- NOTES:
- POSTS 1 & 4, ASSEMBLE WITH THREADS IN HOLE, LEG IN SLOT.
 - POSTS 2 & 3, ASSEMBLE TOP TWO CABLE HOOKS SHORT LEG UP. BOTTOM TWO CABLES HOOKS SHORT LEG DOWN.
 - POSTS 5-10, ASSEMBLE CABLE HOOK. SHORT LEG DOWN.
 - THE SLIT IN THE BOTTOM HOLE OF CET® ANCHOR LINK MAY BE ORIENTATED IN EITHER UPSTREAM OR DOWNSTREAM DIRECTION.
 - ALL CET® U-SHAPED POSTS (POST 1-4), FLAT FACE MUST BE ORIENTATED TOWARD THE CET® ANCHOR ASSEMBLY

DRAWN: M. LOBERG	DATE: 3/21/2025	UNLESS OTHERWISE SPECIFIED, DIMENSIONS ARE IN FEET-INCHES ACCORDING TO ASME Y14.5-2018 AND QMS-SE-003				
CHECKED: A. BASSI	DATE: 4/14/2025	DO NOT SCALE DRAWING				
REVISION DESCRIPTION	ECO	DATE	REV	BY	CHK	
INITIAL RELEASE	9819	-	-	-	-	
SEE SHT 1, CET WAS TRADEMARK ALL LOCATIONS	10350	04/06/26	A	ML	ASB	

CET®
CASS® END TERMINAL
P/N 502380

DRAWING: **SS 2380** REV: **A** SHEET: **2 of 2**

© Valtir, LLC. All rights reserved. QMS-FE-060 Rev 0, (06/01/2022)