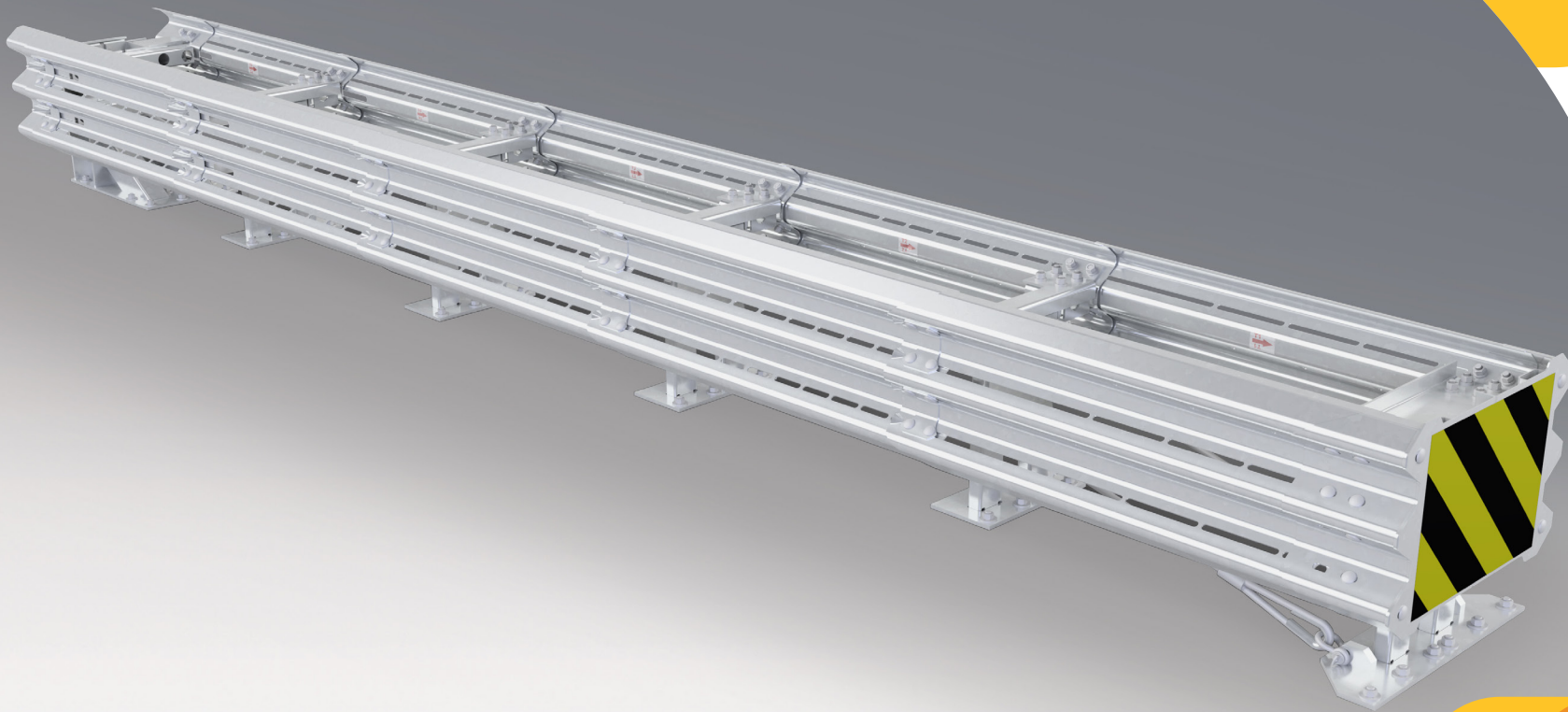


CENTRA™

CRASH CUSHIONS



CE

EN 1317-3



CENTRA™

The CENTRA™ is a redirective, bi-directional crash cushion for hazards up to 610 mm wide and meets testing criteria described in the European Standard EN 1317-3:2010. The system is tested to 110 km/h, 100 km/h, and 80 km/h performance classes. The CENTRA™ includes an impact head assembly, a frontal impact diaphragm and anchor assembly, intermediate diaphragms, and a backup structure all connected via cable assemblies and a series of specially designed thrie-beam panels.

ASSEMBLY AND MAINTENANCE

- Pre-Assembled Diaphragms and Backup Structure.
- Optimized anchoring design for concrete and asphalt applications.
- Bays of the system are connected using a thrie-beam panel system and cable assemblies unique to each performance class.
- A simplistic, straightforward design allows for easy assembly and intuitive maintenance and repair.*
- Can be assembled before transporting to the installation site.

FEATURES

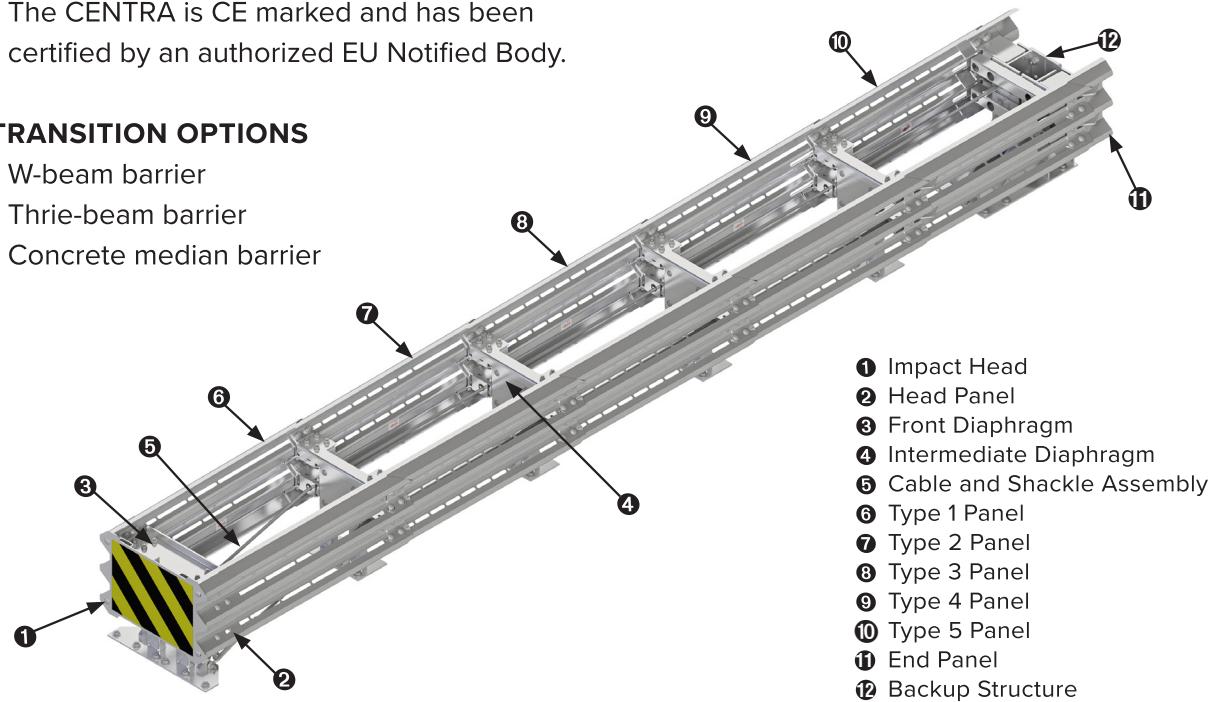
- Suitable for unidirectional or bidirectional applications.
- Compact design.
- Freestanding backup structure.
- Open frame design helps facilitate inspection and maintenance.
- Galvanized design for longer life and durability.
- The CENTRA is CE marked and has been certified by an authorized EU Notified Body.

TRANSITION OPTIONS

- W-beam barrier
- Thrie-beam barrier
- Concrete median barrier

SPECIFICATIONS

Speed Design [km/h]	Overall Length [m]	System Length [m]	Width [m]	Weight [kg]
110	6.84	6.78	0.61	775
100	5.63	5.56	0.61	665
80	4.32	4.27	0.61	551



DISTRIBUTED BY

WWW.VALTIR.COM

USA Headquarters: +1-214-589-8140
 Middle East - Africa: +46 709 66 10 55
 Asia - Pacific - AUS - NZ: +1-214-589-8140
 Canada: +1-214-589-8284
 Caribbean - Latin America: +1-916-644-9108
 Europe: +44 7361 864735

8-23