

## Yodock® 2001 Barricade

### SPECIFICATIONS\*

- 6' Length
- 24" Width
- 46" Height
- Empty: 130 lbs.
- Full Truckload: 80 units
- Freight Class: 250

### MASH

- Ballast Capacity: 75 gal.
- Ballasted Weight: 750 lbs.

### NCHRP 350

- Ballast Capacity: 180 gal.
- Ballasted Weight: 1,500 lbs.



### FHWA LETTERS ELIGIBILITY

- WZ422 Longitudinal Channelizing Device (MASH)
- B97 Barrier Wall TL-2 & TL-3 with 350 Rail Kit (NCHRP 350)
- WZ106/WZ106A Longitudinal Channelizing Device (NCHRP 350)
- WZ107 Type III Barricade (NCHRP 350)
- WZ107 Barricade (NCHRP 350)
- WZ127 Temporary Sign Support (NCHRP 350)

## Yodock® 2001MB Barricade

### SPECIFICATIONS\*

- 6' Length
- 18" Width
- 32" Height
- Empty: 85 lbs.
- Full Truckload: 144 units
- Freight Class: 250

### MASH

- Ballast Capacity: 60 gal.
- Ballasted Weight: 583 lbs.

### NCHRP 350

- Ballast Capacity: 100 gal.
- Ballasted Weight: 900 lbs.



### FHWA LETTERS ELIGIBILITY

- WZ421 Longitudinal Channelizing Device (MASH)
- B97A Barrier Wall TL-2 with 350 Rail Kit (NCHRP 350)
- WZ106/WZ106A Longitudinal Channelizing Device (NCHRP 350)
- WZ107 Type III Barricade (NCHRP 350)
- WZ22/WZ107 Barricade (NCHRP 350)
- WZ127 Temporary Sign Support (NCHRP 350)

# Quick Guide

Model 2001M Barricade  
Model 2001SL Barricade  
Aerocade Barricade

## Yodock® 2001M Barricade

### SPECIFICATIONS

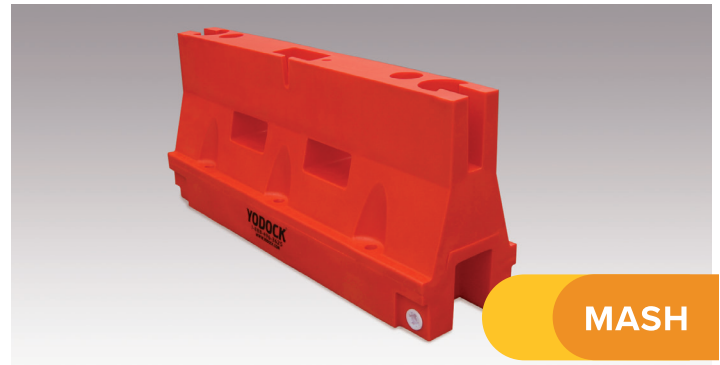
- 6' Length
- 18" Width
- 32" Height
- Empty: 80 lbs.
- Full Truckload: 168 units
- Freight Class: 250

### MASH

- Ballast Capacity: 55 gal.
- Ballasted Weight: 534 lbs.

### NCHRP 350

- Ballast Capacity: 80 gal.
- Ballasted Weight: 750 lbs.



### FHWA LETTERS ELIGIBILITY

- WZ423 Longitudinal Channelizing Device (MASH)
- B97 Barrier Wall TL-2 with 350 Rail Kit (NCHRP 350)
- WZ106/WZ106A Longitudinal Channelizing Device (NCHRP 350)
- WZ107 Type III Barricade (NCHRP 350)
- WZ22/WZ107 Barricade (NCHRP 350)
- WZ127 Temporary Sign Support (NCHRP 350)

## Yodock® 2001 SL Barricade

### SPECIFICATIONS\*

- 6' Length
- Width
  - 12" (not including tie down flanges)
  - 20" (including tie down flanges)
- 18" Height
- Empty: 38 lbs.
- Full: 330 lbs.
- Capacity: 35 gallons
- Full Truckload: 320 units
- Freight Class: 250



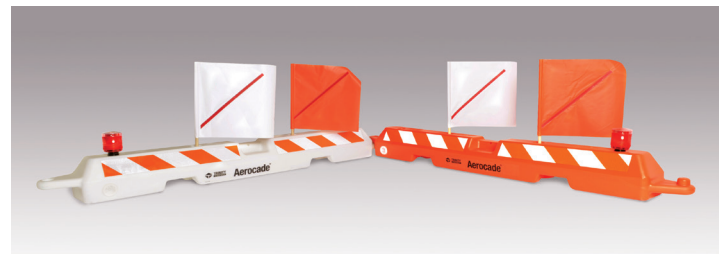
### FHWA ELIGIBILITY

- Tested to WZ220 Longitudinal Channelizing Device

## Aerocade® Barricade

### SPECIFICATIONS\*

- 8' Length
- 10" Width
- 10" Height
- Empty: 20 lbs.
- Full: 205 lbs.
- Capacity: 22 gallons
- Full Truckload: 360 units
- Freight Class: 250



Designed to meet FAA Advisory Circular 150/5370-2G