

TOOLS & MATERIALS

- Rotary Hammer Drill
- Ø 1-1/2" Percussive Drill Bit
- Compressed air
- Round Brush
- Tape Measure
- Phillips Screwdriver
- Anti-Seize Compound - Order Separately (PN 113220)
- Epoxy Kit (1 1/2oz Part A, 1 1/2oz Part B) (one kit will do 1 anchor)
- Gloves

TWISTER®

IMPORTANT!!

DRILL ALL HOLES AND ASSEMBLE ALL POSTS & ANCHORS BEFORE MIXING THE EPOXY ADHESIVE.

STEP 1



Place the adhesive shield then coat threads with anti-seize compound.

STEP 2



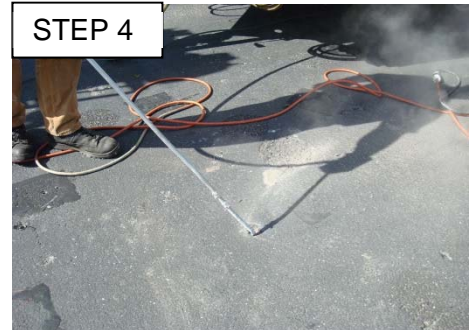
Attach the anchor to the stub and turn it by hand until it stops.

STEP 3



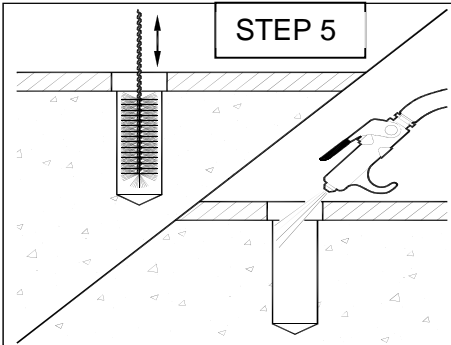
Drill 1-1/2" Diameter x 3-1/2" Deep. **Consult OSHA respiratory standards for crystalline silica exposure.**

STEP 4



Blow out with compressed air.

STEP 5



Brush the hole and blow out again.

STEP 6



Thoroughly mix the epoxy.

STEP 7



Place about two sticks-full of epoxy in the hole.

STEP 8



Coat the anchor with epoxy.

STEP 9



Place the post/anchor assembly into the hole.

STEP 10



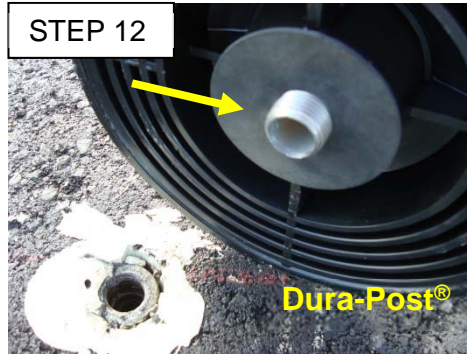
IMPORTANT!!

Let the post sit until the epoxy fully cures (approximately 8 hrs).

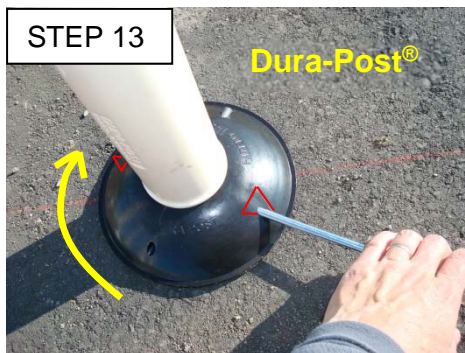
SAFE-HIT® & DURA-POST® TWISTER® ASSEMBLY



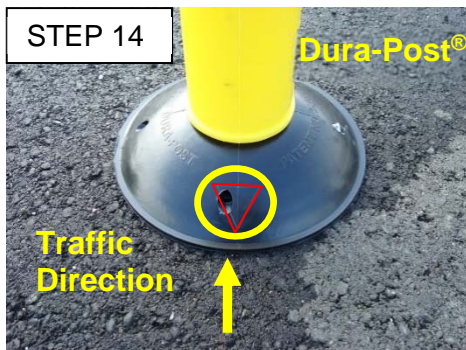
Unscrew the post and remove the adhesive shield and discard.



Place the 2-1/2" neoprene washer over the screw on the base. The washer prevents the base from rotating during service.



Place the threaded stub on the receptacle and tighten snugly with a Phillips screwdriver or similar tool.



IMPORTANT!!

Align either of the arrows to the direction of traffic.

IT IS THE RESPONSIBILITY OF THE INSTALLER TO MAINTAIN A SAFE WORK AREA INCLUDING THE USE OF STANDARD WORK ZONE SAFETY EQUIPMENT & PPE: GLOVES, SAFETY-TOE SHOES, EYE & EAR PROTECTION

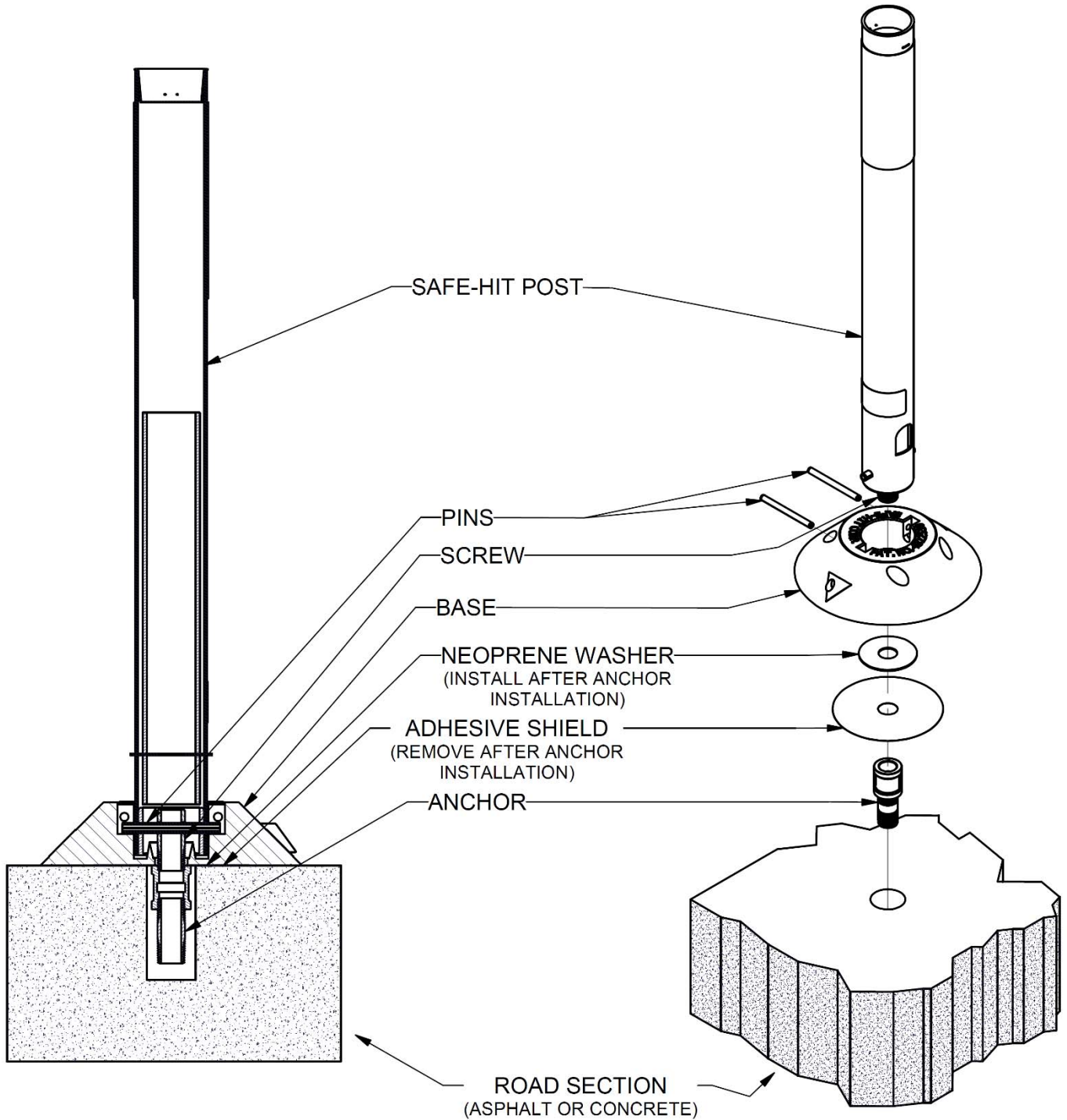


If the post is to be removed, then install the protective plug (optional, PN 114043).

SAFE-HIT®

SAFE-HIT® TWISTER® ASSEMBLY

USE STANDARD WORK ZONE SAFETY EQUIPMENT & PPE:
GLOVES, SAFETY-TOE SHOES, EYE & EAR PROTECTION



DURA-POST® TWISTER® ASSEMBLY

TOOLS & MATERIALS

- Twister® Dura-Post®
- Twister® Base w/pin
- Twister® Pipe Screw
- Hammer
- Tape Measure
- Scissors



STEP 1



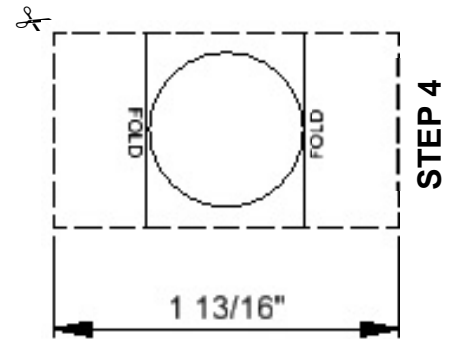
Place the post into the base. Align the line on the post to the line on the base.



STEP 2



STEP 3



STEP 4

Cut out the screw Alignment Tool.



STEP 5



STEP 6

Fold the Alignment Tool and put it on the Pipe Screw as shown with the hole lined up with the "U" of the Alignment Tool.

Insert the Pipe Screw until the Alignment Tool contacts the bottom of the base.

**USE STANDARD
WORK ZONE SAFETY
EQUIPMENT & PPE:
GLOVES, SAFETY-TOE
SHOES, EYE & EAR
PROTECTION**



STEP 7

Drive the pin while holding the Pipe Screw in position.



Completed assembly

DURA-POST® TWISTER® ASSEMBLY

USE STANDARD WORK ZONE SAFETY EQUIPMENT & PPE:
GLOVES, SAFETY-TOE SHOES, EYE & EAR PROTECTION

