

Yodock® Longitudinal Barrier Kit

BARRICADES



Yodock® Longitudinal Barrier Kit

The Yodock® Longitudinal Barrier Wall Steel Reinforcement Kit is a system component used to modify traditional Yodock® plastic barricades to NCHRP Report 350 Test Level 2 and 3 tested Longitudinal Barriers. The kit consists of steel rails, support and splice brackets, and connecting hardware which are attached to the plastic water-filled barriers via the fork lift ports.

The Yodock® 2001M and Yodock® 2001MB barricades with the Longitudinal Barrier Kit are tested to NCHRP Report 350 Test Level 2 criteria for Longitudinal Barrier. The Yodock® 2001 barricade with the Longitudinal Barrier Kit is tested to NCHRP Report 350 Test Level 3 criteria for Longitudinal Barrier.

FEATURES

- Yodock® 2001 model with 350 Rail Kit is tested to NCHRP Report 350 Test Level 3.
- Yodock® 2001M and 2001MB models with 350 Rail Kit are tested to NCHRP Report 350 Test Level 2.

ASSEMBLY AND MAINTENANCE

- Can be transported and relocated individually or in sections.
- Fill caps and separate drain plugs for easier setup.
- Patented forklift access for maneuverability.

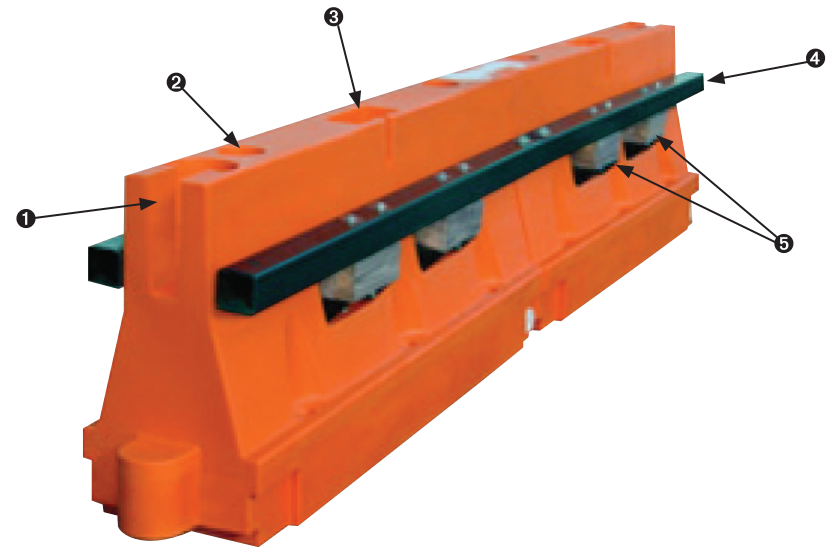
FHWA ELIGIBILITY

- Longitudinal Barrier for NCHRP Report 350 Test Level 2 and Test Level 3 applications.

- ❶ Coupler Recess
- ❷ Fill Hole
- ❸ Light Box Recess
- ❹ Steel Tubing Side Rails
- ❺ Steel Tubing Support Brackets

SPECIFICATIONS

- (2) Box Beam Rails: 72" (1,830 mm) x 3½" (89 mm) x 3½" (89 mm) x 3/4" (6.4 mm), A500 Grade B
- (4) Steel Brackets: Grade A36 Steel
- (4) Box Beam Connection Bolts: 3/4" (19 mm) x 1¾" (44 mm), A307 Carriage Bolt, Nut, Washer
- (2) Splice Brackets: Grade A36 Steel
- (4) Box Beam Splice Bolts: 3/4" (19 mm) x 5½" (140 mm), Grade 8 Hex Bolt, Nut, Washer



DISTRIBUTED BY

10-22

WWW.VALTIR.COM
1.888.496.3625