

Square Slip Base Breakaway System

SIGN POSTS & SIGN SUPPORTS



Square Slip Base Breakaway System

The Square Slip Base Breakaway sign support systems are designed to facilitate easier installation and maintenance, and to help minimize damage upon vehicle impact within NCHRP Report 350 crash test standards. The system is tested to NCHRP Report 350 and designed to AASHTO guidelines.

In the event of an impact within NCHRP Report 350 crash test standards, the system retaining plate is designed to shear allowing the post and casting to release from the post base. Repairs can be as easy as replacing the retaining plate and resetting the bolts holding the casting to the anchor.*

S-Q 8 System - 2.5" Sq. Sign Support



S-Q 8 Casting with 2.5" square perforated galvanized post and Cast Base.

The S-Q 8 system features a triangular slip base with 8" sides and is designed to be used in combination with our ground stub system or retrofit onto existing 8" triangular ground stubs.

In combination with a 2.5" square 12 ga post, the system is rated to be used with up to 16-sq. ft. signs in single post applications. A 2.5" 10 ga post is rated to be used with up to 20-sq. ft. signs.

2.5" and 3" Galvanized Signposts and Options

- 2.5" square signposts and 2.5" square perforated signposts are available in 12 ga and 10 ga wall thicknesses and stocked in 10', 12', 14', 20' and 24'.
- 3" square signposts are available from stock in standard lengths. Wall thicknesses available include up to 7 ga (.180" nom). This product offers a new option for replacement of sign supports including small I-Beam.
- Both 2.5" and 3" signposts are available powder coated in yellow, black, green, or white.

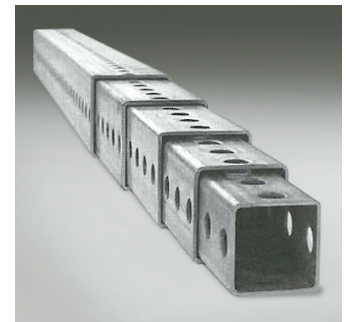
S-Q 10 System - 3" Sq. Sign Support



S-Q 10 Casting with 3" square perforated galvanized post and Cast Base.

The S-Q 10 System features a triangular slip base with 10" sides and is designed to be used in applications where larger signs are required.

In combination with a 3" square 7 ga post, the system is rated to be used with up to 32-sq.ft. signs in single post applications.



DISTRIBUTED BY