



ArmorBuffa[®]

TEMPORARY END TREATMENT

By Valmont Highway

PRODUCT MANUAL

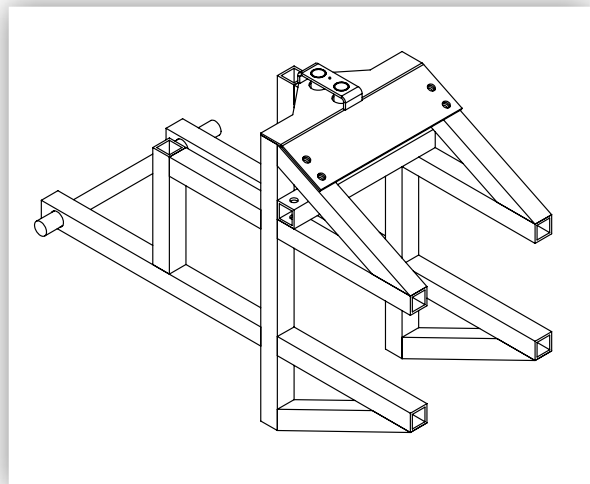
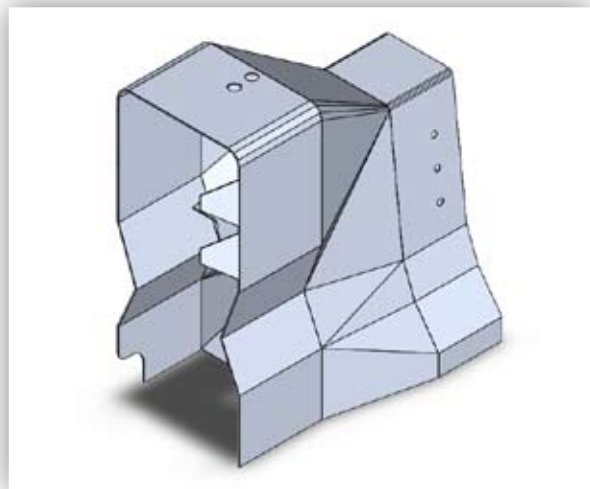
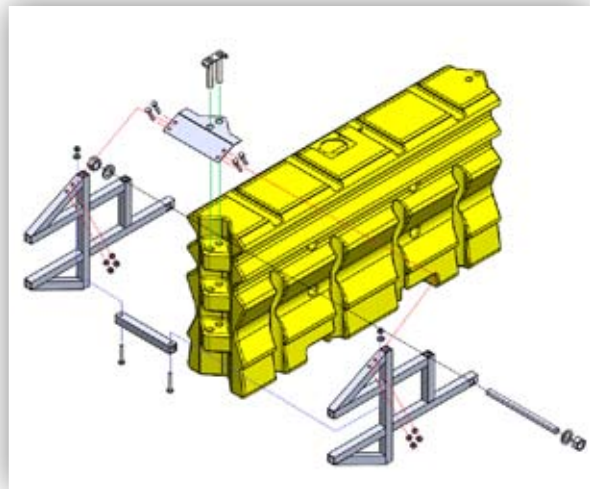


TABLE OF CONTENTS

1.0	ArmorBuffa TL3 Introduction.....	3
2.0	Recommended Tools.....	3
3.0	Parts Identification	4
4.0	Preparation	7
5.0	Documentation	7
6.0	Important Notes.....	7
7.0	Anchoring Specifications	7
8.0	ArmorBuffa MASH TL-3 Exploded Assembly Overview ...	8
8.1	ArmorBuffa MASH TL-3 Concrete Kit.....	9
8.2	ArmorBuffa MASH TL-3 HighwayGuard Temporary Steel Barrier Kit	10
9.0	Installation Procedure.....	12
10.0	ArmorBuffa Element Capacity.....	19
11.0	Transportation and Storage.....	19
12.0	Inspector Checklist	20
13.0	Maintenance Inspection	20
14.0	Walk-Up Inspections.....	21
15.0	Design Life	21
16.0	Maintenance.....	22
17.0	Recycling	22
18.0	Anti-Freeze Solutions.....	22

APPENDIX – TECHNICAL DRAWINGS

18.0	10200320: ArmorBuffa Transition TL3 Concrete.....	23
19.0	10200343: ArmorBuffa Transition HighwayGuard.....	24
20.0	10200322: ArmorBuffa Element Orange	25
21.0	10200323: ArmorBuffa Element Yellow.....	26
22.0	10200324: ArmorBuffa Steel Nose Assembly.....	27
23.0	10200325: ArmorBuffa Nose Cover	28
24.0	10200326: ArmorBuffa Cable.....	29
25.0	10200327: ArmorBuffa Nose Pin	30
26.0	10200328: ArmorBuffa Asymmetric Pin	31
27.0	10200204: Twin Pin for ArmorZone	32
28.0	MET-16082021: ArmorBuffa to HighwayGuard Test Assembly.....	33



1.0 INTRODUCTION

The ArmorBuffa™ is a non-redirective, gating, crash cushion designed to meet the latest test standards defined in the Manual for Assessing Safety Hardware (MASH), Second Edition, 2016. The ArmorBuffa™ system utilizes a Transition, water-filled Elements and a Nose Piece to absorb kinetic energy and safely contain or control the penetration trajectory of impacting vehicles.

The system is comprised of a Nose Piece, water-filled Elements, Pins, a Transition and mechanical anchors. All Elements are always filled with water.

ArmorBuffa is available in the following configuration:

- TL3 for speed zones up to 62 Mph (100 Km/h)
(3 yellow and 1 orange element)

The system has a nominal 43.3" (1,100mm) height, 18.1" (460mm) width, and an effective length of 366.7" (9,313mm) for TL-3 when installed on temporary concrete barrier or steel HighwayGuard temporary barrier.

ArmorBuffa™ is designed to protect the end of a temporary concrete barrier, HighwayGuard and other steel temporary barriers.

2.0 RECOMMENDED TOOLS

NOTE: The list of tools, safety equipment, and traffic control is a general recommendation and should not be considered a comprehensive list. Depending on the specific characteristics of the job site and the complexity of the repair or assembly, more or less tools may be necessary.

Required Tools

- Tape Measure
- Chalk Line
- Marking Paint
- Rotary Hammer
- Masonry Bit
- 1/2" Drive Torque Wrench
- Electric Drill
- Compressed Air
- 3/4" Diameter Brush
- 1/2" Drive Deep Sockets
M16, M36
- Impact Wrench
(pneumatic or electric)
- 16mm x 150mm
- 5 ft-lbf [8 N-m] to 100 ft-lbf [135 N-m]

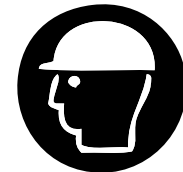
NOTE: Water source with a flexible hose (maximum 3.0" [76mm] diameter) and a minimum of 739.7 US Gallons (2800L) capacity is required for the 4 element, TL-3 system.

For cold weather regions, a few typical Anti-Freeze agents are listed in Section 17.0.

Safety Equipment



Gloves



Hard Hat



Steel-Capped Footwear



Safety Vest



Safety Glasses



Dust Mask



Hearing Protection

Traffic Control

- Traffic Control Equipment
- Traffic Control Plan



3.0 PARTS IDENTIFICATION

3.1 ArmorBuffa MASH TL3 Identification and Installation

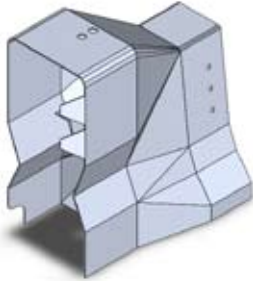


Use only Valmont Highway parts that are specified by Valmont Highway for use with the ArmorBuffa™ System. The use of unspecified parts is prohibited and could result in severe personal injury or death.

Part #	Description	Concrete Kit	HighwayGuard Kit
10200320	ArmorBuffa Transition TL3 Concrete	1	0
10200343	ArmorBuffa HighwayGuard Transition	0	1
10200322	ArmorBuffa Element - Orange	1	1
10200323	ArmorBuffa Element - Yellow	3	3
10200324	ArmorBuffa Steel Nose Assembly	1	1
10200325	ArmorBuffa Nose Cover	1	1
10200326	ArmorBuffa Cable	1	1
10200327	ArmorBuffa Nose Pin	1	1
10200328	ArmorBuffa Asymmetric Pin	1	1
10200204	ArmorZone Pin	3	3
10200329	ArmorBuffa Transition TL3 Concrete Fixing Bolt Kit	1	0
	ArmorBuffa Transition HighwayGuard Fixing Bolt Kit	0	1
10200045	ArmorBuffa MASH TL3 Concrete Kit - Complete	1	0
10200046	ArmorBuffa MASH TL3 HighwayGuard Kit - Complete	0	1
10200200	Drainage Bung	1	1
10200202	Bung Spanner	1	1

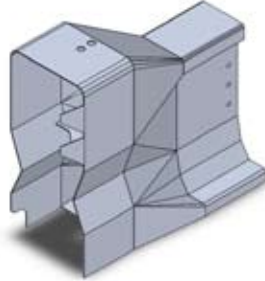


3.0 PARTS IDENTIFICATION (CONTINUED)



10200320
ArmorBuffa Transition TL3

Concrete Kit: 1
HighwayGuard Kit: 0



10200343
ArmorBuffa Transition
HighwayGuard

Concrete Kit: 0
HighwayGuard Kit: 1



10200322
ArmorBuffa Element - Orange

Concrete Kit: 1
HighwayGuard Kit: 1



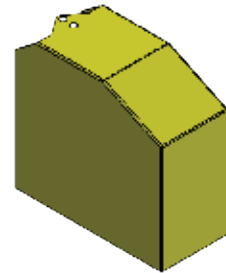
10200323
ArmorBuffa Element - Yellow

Concrete Kit: 3
HighwayGuard Kit: 3



10200324
ArmorBuffa Steel Nose Assembly

Concrete Kit: 1
HighwayGuard Kit: 1



10200325
ArmorBuffa Nose Cover

Concrete Kit: 1
HighwayGuard Kit: 1



10200326
ArmorBuffa Cable

Concrete Kit: 1
HighwayGuard Kit: 1



10200327
ArmorBuffa Nose Pin

Concrete Kit: 1
HighwayGuard Kit: 1



10200328
ArmorBuffa Asymmetric Pin

Concrete Kit: 1
HighwayGuard Kit: 1

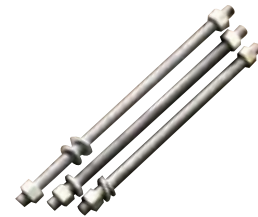
3.0 PARTS IDENTIFICATION (CONTINUED)



10200204
ArmorZone Pin
Concrete Kit: TL-3 3
HighwayGuard Kit: TL-3 3



10200329
ArmorBuffa Transition TL3
Concrete Fixing Bolt Kit
Concrete Kit: 1
HighwayGuard Kit: 0



ArmorBuffa Transition
HighwayGuard
Fixing Bolt Kit
Concrete Kit: 0
HighwayGuard Kit: 1



10200045
ArmorBuffa MASH TL3
TL3 Concrete Kit



10200046
ArmorBuffa MASH TL3
HighwayGuard Kit



10200200
Drainage Bung



10200202
Bung Spanner

4.0 PREPARATION

4.1 Foundation

The ArmorBuffa™ system is designed to perform on a variety of foundations including concrete, asphalt, and any other surfaces capable of bearing the weight of the system.

Uneven surfaces should be flattened, and large debris removed from the foundation prior to installation.

Cross slopes of up to 8% (5° or 1:12 slope) can be accommodated with the standard hardware and the instructions provided in this manual. For slopes in excess of 8%, contact Valmont Highway.

4.2 Transition

ArmorBuffa™ is designed to accommodate a temporary concrete barrier and HighwayGuard steel temporary barrier.

Placement and installation of the ArmorBuffa™ system must be accomplished in accordance with the local Road Authority Design Guide and other state and local standards.

Before installing the ArmorBuffa™ system, ensure that all the materials required for the system are on site and have been identified.

5.0 DOCUMENTATION

Prior to installation and assembly of the ArmorBuffa™ system, ensure you have read and understand the installation and assembly instructions as described in this product manual.

- ArmorBuffa Product Manual (check for current revision posted at www.valmonthighway.com).
- System Drawings (check www.valmonthighway.com for current revision, located in installation manual).

6.0 IMPORTANT NOTES

- Sign Convention
The term Front = At the Nose Plate
The term Rear = At the Transition
- This manual follows installation steps for a complete ArmorBuffa™ system that is installed on site or relocated to another location.

See Page 19 for water filling instructions.



If soil conditions on site do not meet or exceed the required strength detailed in this manual, site specific foundations must be designed by a local geotechnical engineer.

Care should be taken to ensure that appropriate Anti -Freeze solutions are used in accordance with federal, state, and local requirements. A few typical Anti-Freeze solutions are listed in section 17.0.

7.0 ANCHORING SPECIFICATIONS

The ArmorBuffa™ system uses M16 x 150mm Excalibur™ Screw Bolts or equivalent for anchoring to temporary concrete barrier. 3 x M16 8.8 threaded rod is used to attach the transition to HighwayGuard steel barrier.



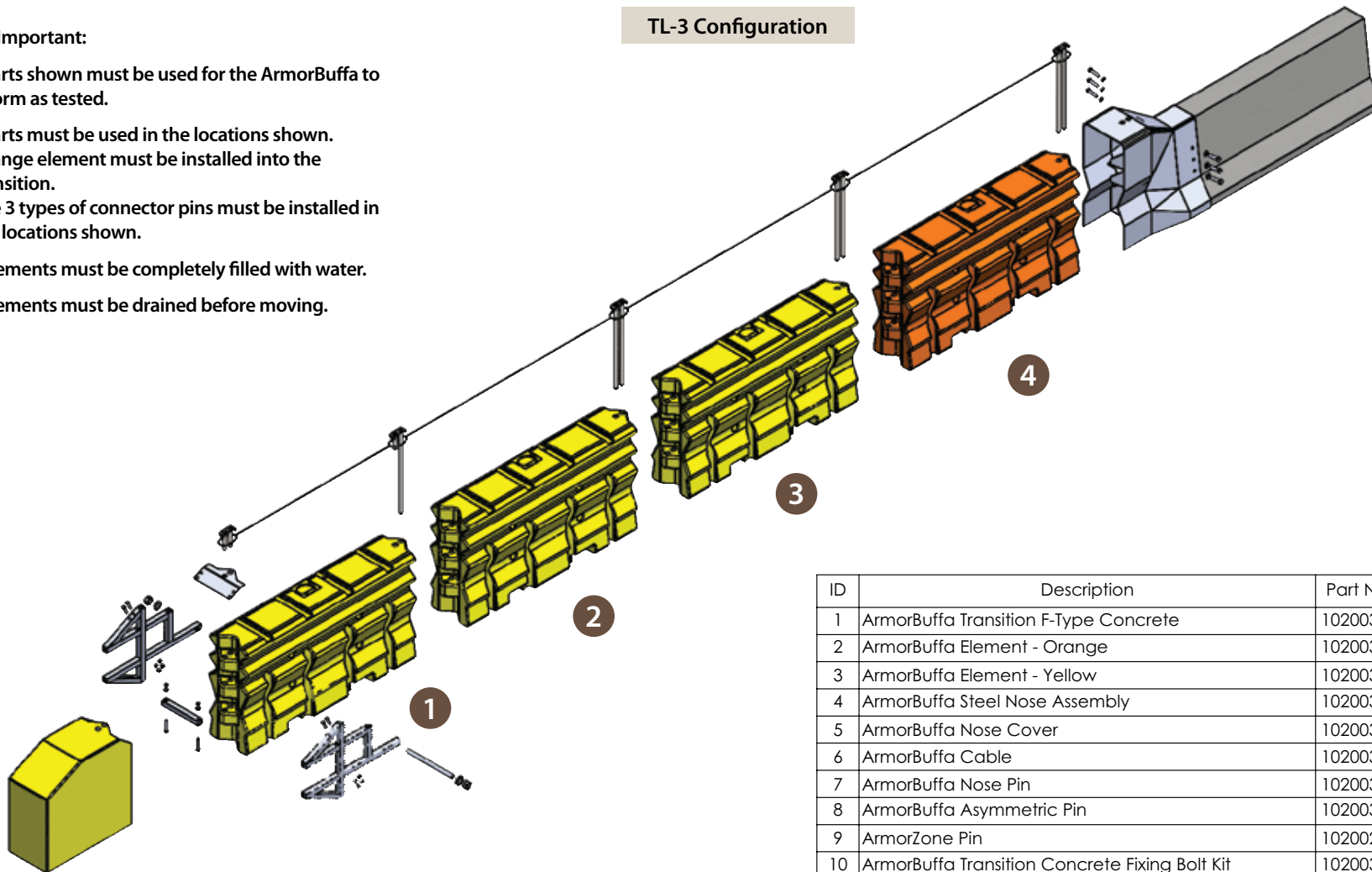
8.0 ARMORBUFFA MASH TL-3 EXPLODED ASSEMBLY OVERVIEW



Important:

- All parts shown must be used for the ArmorBuffa to perform as tested.
- All parts must be used in the locations shown.
 - Orange element must be installed into the transition.
 - The 3 types of connector pins must be installed in the locations shown.
- All elements must be completely filled with water.
- All elements must be drained before moving.

TL-3 Configuration

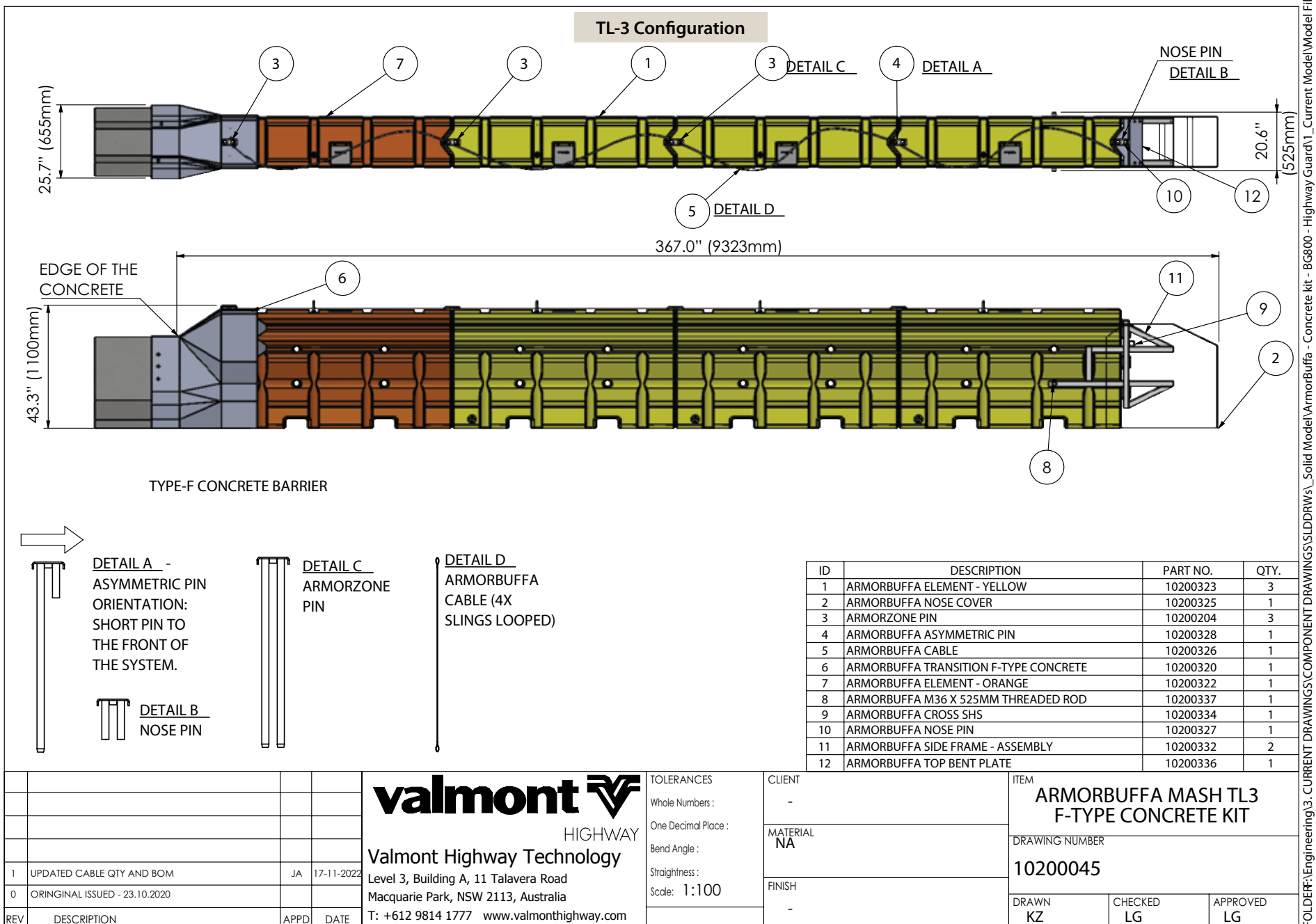


ID	Description	Part No.	Qty
1	AarmorBuffa Transition F-Type Concrete	10200320	1
2	AarmorBuffa Element - Orange	10200322	1
3	AarmorBuffa Element - Yellow	10200323	3
4	AarmorBuffa Steel Nose Assembly	10200324	1
5	AarmorBuffa Nose Cover	10200325	1
6	AarmorBuffa Cable	10200326	1
7	AarmorBuffa Nose Pin	10200327	1
8	AarmorBuffa Asymmetric Pin	10200328	1
9	AarmorZone Pin	10200204	3
10	AarmorBuffa Transition Concrete Fixing Bolt Kit	10200329	1

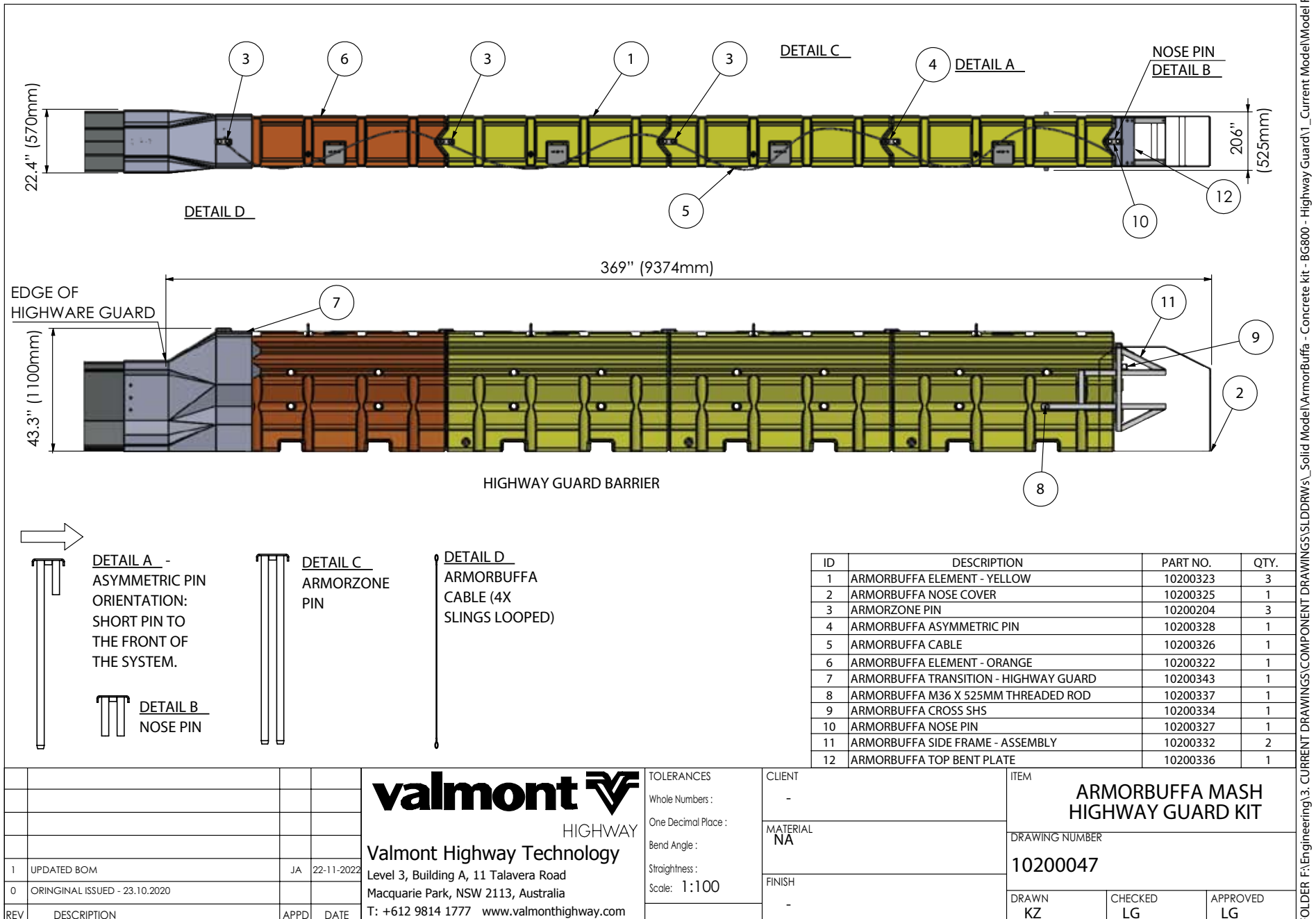
				<div><div><div><div><div><div></div></div></div><div><div><div>valmont</div><div></div></div></div><div><div></div><div>HIGHWAY</div></div><div>Valmont Highway Technology</div><div>Level 3, Building A, 11 Talavera Road</div><div>Macquarie Park, NSW 2113, Australia</div><div>T: +612 9814 1777 www.valmonthighway.com</div></div></div></div>	<div>TOLERANCES</div> <div>Whole Numbers :</div> <div>One Decimal Place :</div> <div>Bend Angle :</div> <div>Straightness :</div> <div>Scale:</div>	<div>CLIENT</div>	<div>ITEM</div> <div>ArmorBuffa to Concrete</div> <div>Temporary End Treatment</div>		
						<div>MATERIAL</div>	<div>DRAWING NUMBER</div> <div>ARMB-JJH-01</div>		
						<div>FINISH</div>	<div>DRAWN</div>	<div>CHECKED</div>	<div>APPROVED</div>
	ORIGINAL ISSUE - 01.10.2021						<div>VB</div>	<div>JA</div>	<div>LB</div>
REV	DESCRIPTION	APPD	DATE						

FOLDER F:\Business Development\Technical Library\Valmont Highway\Methane Drawings (WIP-Vitor)\For Approval Letters\

8.1 ARMORBUFFA MASH TL-3 CONCRETE KIT



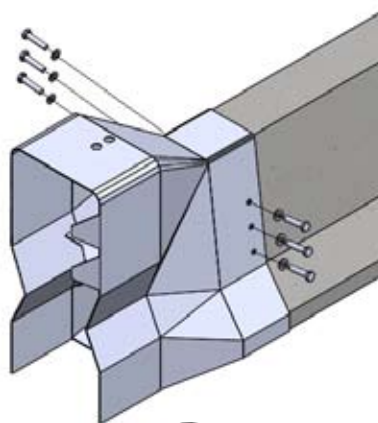
8.2 ARMORBUFFA MASH TL-3 HIGHWAYGUARD TEMPORARY STEEL BARRIER KIT



9.0 INSTALLATION PROCEDURE

STEP 1A

Transition Fixing to Concrete Barrier



Dust Mask



Safety Glasses



Gloves



Hearing Protection

INSTRUCTIONS

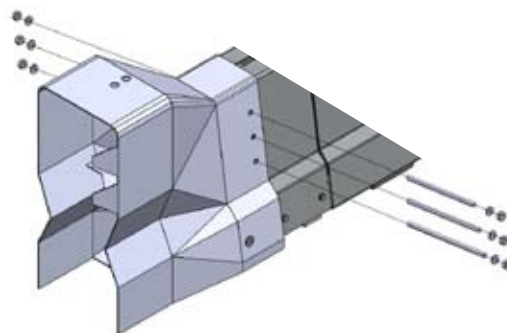
1. Slide transition over the end of the temporary concrete barrier, ensuring it is pushed on as far as possible flush up against the end of the barrier. Then mark the location of the 6 holes.
2. Remove the transition and drill 6 x 0.25" (16mm) x 6" (150mm) holes as marked. If a hole cannot be drilled due to encountering rebar, then the use of 2 screw bolts per side is permitted.
3. Slide the transition back into place and then screw in the 3 Excalibur™ bolts per side, firmly fastening the transition to the barrier.



Wear proper PPE when clearing debris. This operation produces concrete dust.

STEP 1B

Transition Fixing to HighwayGuard

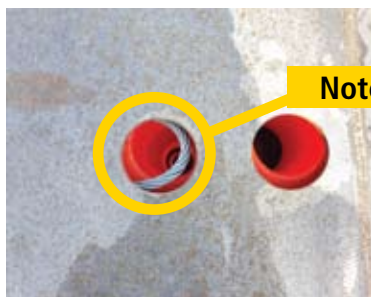
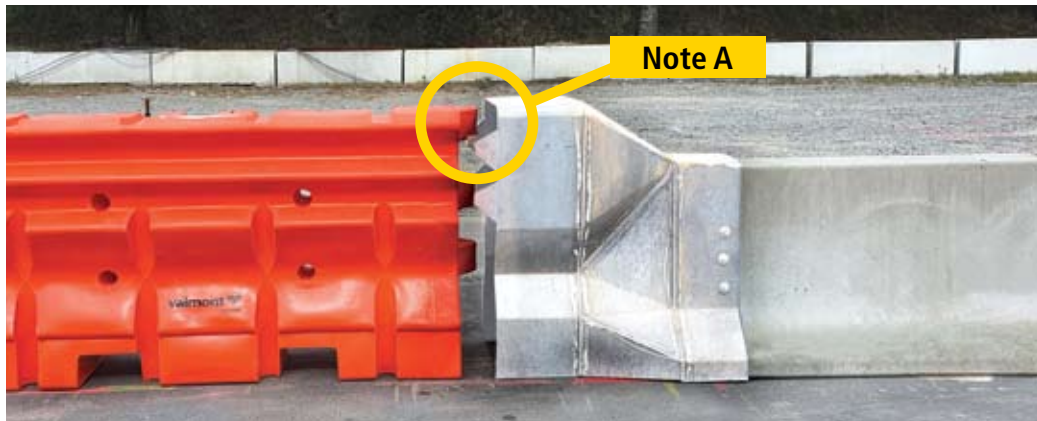


INSTRUCTIONS

1. Slide HighwayGuard transition over the anchored HighwayGuard terminal end.
2. Mark the location of the 6 fixing holes on the HighwayGuard (3 on either side), then remove the transition.
3. Drill 6 x 0.7" (18mm) holes into the HighwayGuard barrier as marked.
4. Slide the HighwayGuard transition onto the end of the HighwayGuard barrier and insert the M16 threaded rod through each hole, add nuts and washers as shown.
5. Tighten the 6 nuts to 36.9 ft-lbf (50Nm).

STEP 2

Attachment to ArmorBuffa Elements

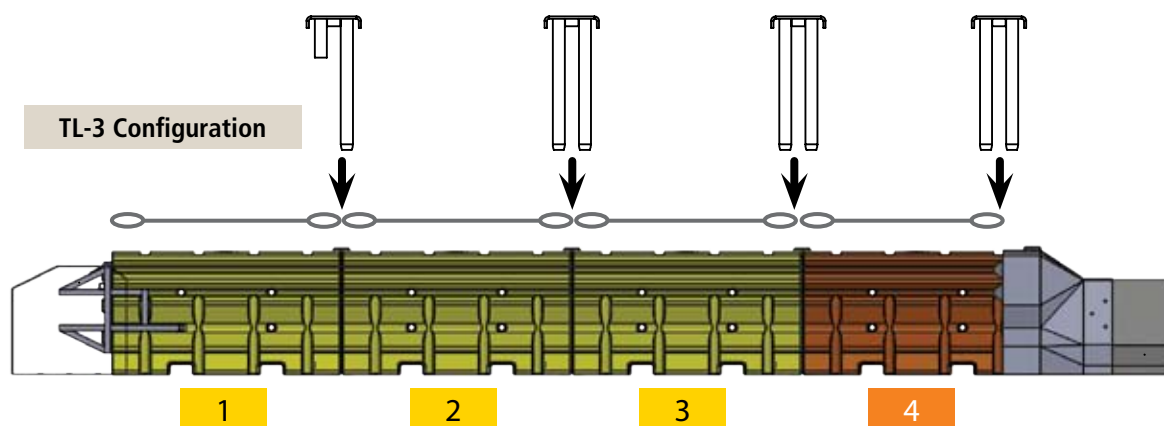
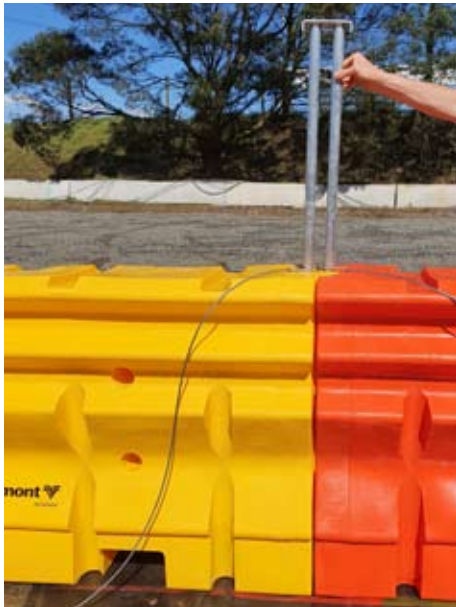


INSTRUCTIONS

1. Check the drain bung is tight so it will not leak.
2. Slide the orange element into the transition ensuring the element is orientated as shown in Note A with the element end with the highest connector lug inserted.
3. Insert standard twin pin into the transition holes, coupling the orange element and steel cable together, as shown in Note B.
4. Slide the 3 yellow elements into position.

STEP 3

Adding ArmorBuffa Elements

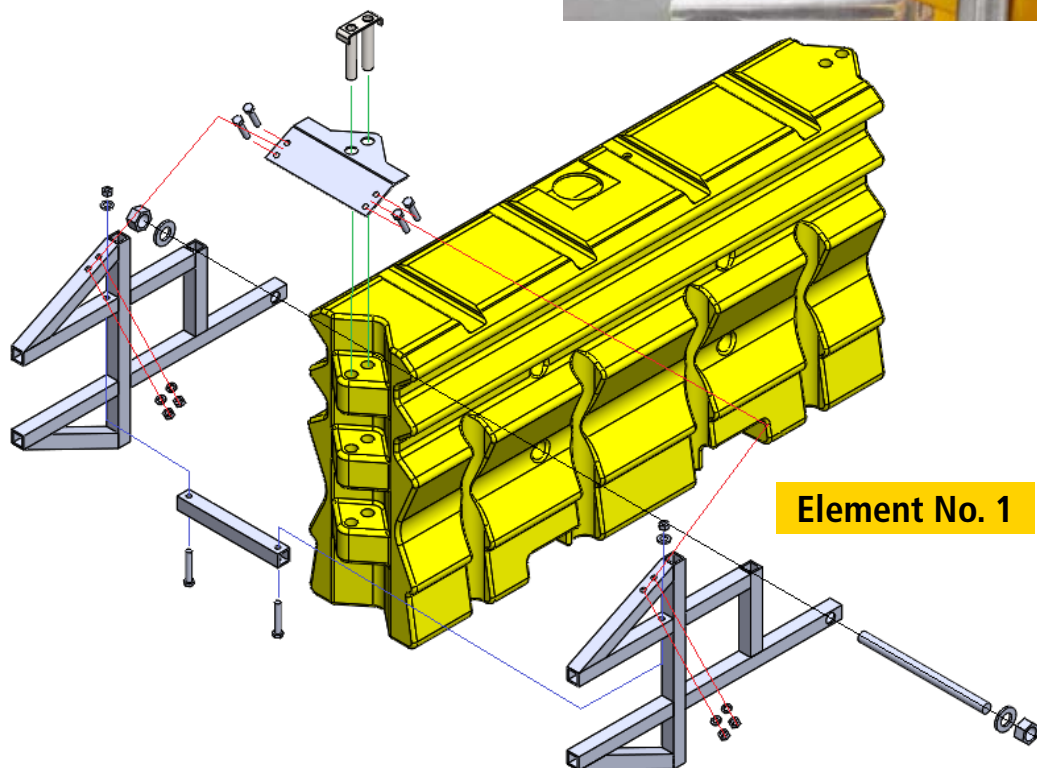


INSTRUCTIONS

1. Pin the 3 yellow elements (for TL-3 configuration) with the pins as shown, engaging the steel cable.
2. The the asymmetric pin must be used to connect the yellow elements 1 and 2.

STEP 4

ArmorBuffa Nose Plate Assembly



INSTRUCTIONS

1. Bolt the steel nose onto the exposed end of yellow element No. 1, as shown above.
2. Tighten nuts and bolts to 36.9 ft-lbf (50Nm).

STEP 5

ArmorBuffa Steel Nose Assembly



INSTRUCTIONS

1. Fit the cable through the nose pin as shown in Note A.
2. Slide the yellow plastic nose cover into position and insert the nose pin through the nose cover into the steel nose assembly as shown in Note B. Ensuring the pin engages the cable loop.

STEP 6

Final Inspection and Filling of Elements



INSTRUCTIONS

1. Inspect installed system ensuring the correct pins are in the correct locations and that the steel cable is engaged through each pin.
2. Fill all 4 elements (1 x orange and 3 x yellow for TL-3 configuration) with water to capacity (within 1.0" (25mm) of the top) using the filling port, 184.9 US Gallons (700 litres) per element.
3. Ensure the Water Fill Level Indicators are raised above the top of the element, indicating the element is full of water.
4. Check there are no leaks in the elements or around the drain bungs.



In regions where the water filled elements could become frozen, appropriate anti-freeze solutions should be used. Failure to do so will result in improper performance of the system and may cause serious bodily injury.

Care should be taken to ensure that appropriate Anti-Freeze solutions are used in accordance with federal, state, and local requirements. A few typical Anti-Freeze solutions are listed in section 17.0.

STEP 7

Disassembly and Relocation



INSTRUCTIONS

1. Drain elements by removing the bungs and then disassemble in the reverse order of assembly.



Do not stack full elements! Do not lift or move full elements!

Note: The transition can be left on the end of the temporary barrier for transportation and relocation, as can the steel nose assembly be left on the plastic Element No. 1.

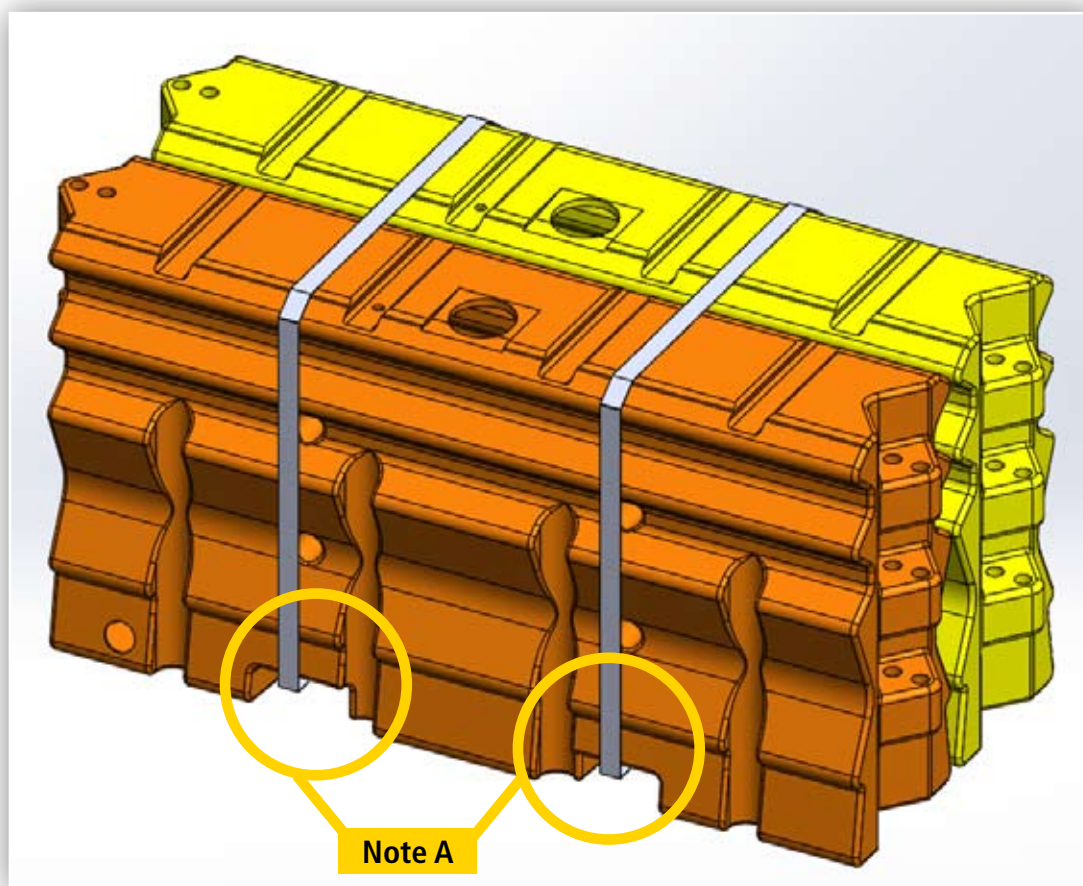
10.0 ARMORBUFFA ELEMENT CAPACITY

Liquid Capacity US Gallons	Liquid Capacity Litres
184.9 US Gallons	700 Litres

11.0 TRANSPORTATION AND STORAGE

When empty, Elements are designed to be transported and stored in strapped bundles of 2, as shown below, and can be lifted via the forklift pockets shown in Note A.

The Transition Piece, Steel Nose Assembly and Nose Cover are to be strapped to pallets for transportation.



WARNING : Elements must be emptied before being moved or transported.

12.0 INSPECTOR CHECKLIST

Confirm all items in the checklist have been properly completed and hardware installed properly.

Installation Checklist		
Item	Date	Initial
Nose Piece is firmly attached to Element No. 1.		
The cable assembly is linked through each of the five (5) connector pins for TL3 configuration.		
All Elements and Nose Cover are connected with the correct pin (refer to diagrams on pages 8 thru 12).		
Concrete transition is secured to the Transition Barrier with three (3) M16 Anchors on each side, or for HighwayGuard three (3) M16 threaded rods.		
Anchors torqued to 36.9 ft-lbf (50Nm).		
All Element(s) full of water, or suitable anti-freeze solution and the Water Fill Level Indicators are raised above the top of the element.		
Plug at drain ports fully seated and secure with no sign of leakage.		
Cold Weather Applications Only		
Anti-Freeze solution applied in accordance with manufacturer's specifications.		

Inspector signature: _____

Date: _____

13.0 MAINTENANCE INSPECTION

Crash cushions, like all roadside safety hardware, require inspection to ensure they are in acceptable working condition. Regular inspections of the ArmorBuffa™ system is recommended and shall be made by the local highway authority. Frequency of the inspections shall be made based on site conditions, traffic volumes, and crash history. The water level in all elements must be checked regularly. This can be done by checking that the Water Fill Level Indicators are raised above the top of the elements. Please follow the Local guidelines for frequency of inspections to ensure adequate repairs are made to the system. Walk-up inspections are recommended at least twice a year.

14.0 WALK-UP INSPECTIONS

Recommended Frequency – Twice a Year

Before performing walk-up inspections, ensure traffic control is deployed in accordance with local guidelines.

Check for:

- Water level is within 1.0" (25mm) of the top of the Element's fill ports (verified by the Water Fill Level Indicators being raised above the top of the elements).
- Damage caused by vehicle impacts
- Damage caused by impacts from roadside maintenance equipment
- Misalignment
- Missing components
- Vandalism
- Clear and dispose of any debris in and around the system

After inspection is complete, ensure all items identified during the inspection process are corrected. The ArmorBuffa™ system shall be returned to proper condition as outlined in the installation instructions.

Walk-Up Inspection	
Item	Comment
Water level is within 1.0" (25mm) of the top (check the Water Fill Level Indicators are raised above the top of the element).	
Damage caused by vehicle impacts	
Minor damage caused by impacts from roadside maintenance equipment	
Misalignment	
Missing components	
Vandalism	
Clear and dispose of any debris in and around the system	
Grading around system	
Fill Lids are fully seated. (Step 6, Page 19)	

Inspector Signature: _____ Date: _____

Print Name: _____ Location: _____

15.0 DESIGN LIFE

The design life of the ArmorBuffa MASH TL3 End Treatment is 20 years. This is based on the properties and performance of the UV stabilised HDPE and MDPE plastic and also the hot dip galvanizing of the connector pins, steel transition and steel nose assembly. Please note each plastic element has a unique serial number to enable manufacturing traceability.

16.0 MAINTENANCE

ArmorBuffa™ MASH is a maintenance free system but it is recommended that inspections are carried out periodically to ensure that the system is installed as required.

Over a long period of time in extreme conditions it may be possible for evaporation to take place and it is imperative that all the elements remain filled to the correct level.

17.0 RECYCLING

The ArmorBuffa™ MASH End Treatment is manufactured from UV stabilised HDPE and MDPE and therefore the material in any units damaged beyond repair can be recycled. The connector pins, nosepiece and transition are manufactured from steel and can also be recycled.

18.0 ANTI-FREEZE SOLUTIONS

In regions where the water filled ArmorBuffa Element(s) could become frozen, proper Anti-Freeze agents should be used. Care should be taken to ensure that proper Anti-Freeze agents are used in accordance with local regulations, environmental concerns and ensuring that any post impact liquid on the road surface does not constitute an undue hazard to adjacent motorists.

The information outlined in this document is intended to provide a general guide to choosing, calculating, and applying Anti-Freeze solutions. The actual method and implementation of an Anti-Freezing solution should be determined by federal, state and local standards and in accordance with the specific manufacturer's instructions.

Considerations for choosing an Anti-Freeze should include environmental impact on local vegetation and waterways, corrosion of existing structures, and the effect on concrete or asphalt roadways. Transportation, installation, and handling of the material should also be considered. The examples listed below are products commonly used on highways as de-icing road and bridge conditioners and for dust control. Specific information pertaining to these products regarding said considerations should be readily available from the product supplier or manufacturer.

The correct mixture of Anti-Freeze and water is critical to insure proper ice prevention and performance of the ArmorBuffa crash cushion. The freezing capacity depends on the particular chemical and the solution concentrate by percent weight of the solution.

Both too little and too much solution will result in diminished freezing capacity. The ideal solution concentration for maximum capacity is specific to the chemical chosen. It may be desirable to reduce the concentration for cost savings if the maximum capacity is not necessary.

Depending on the form the chemical is provided; such as a fluid, powder, or pellet; the actual amount of the desired chemical may not constitute 100% of the material by weight.

It is important to account for the actual weight of the deicing chemical when mixing the solution.

Typical solution concentrations are listed in the table below. Some of the following are available as a fluid solution of definite concentration or pellets and flakes in various sized bags. If purchased in flake or pellet form, care must be taken in dissolving it in water.

Also, the concentrate must be calculated from the actual Anti-Freeze agent content. For example, if the flake/pellet agent purchased has a Calcium Chloride content of 80% and a 29% solution by weight is desired, the quantity added must account for the impurity of the agent. These principles apply to many various Anti-Freezing chemicals.

17.1 Table of Typical Anti-Freeze Solutions

Anti-Freeze Agent	Concentration %	Operating Temp, °F (°C)
Calcium Chloride (CaCl ₂)	29%	-51°F (-60°C)
Liquid CMA (Calcium Magnesium Acetate)	33%	-28°F (-18°C)
Magnesium Chloride (MgCl ₂)	22%	-33°F (-28°C)
Sodium Chloride (NaCl)	23%	-21°F (-6°C)
Liquid Potassium Acetate (KAc)	49%	-60°F (-76°C)

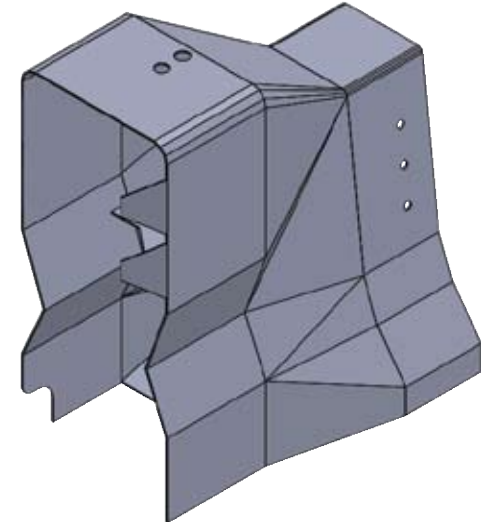
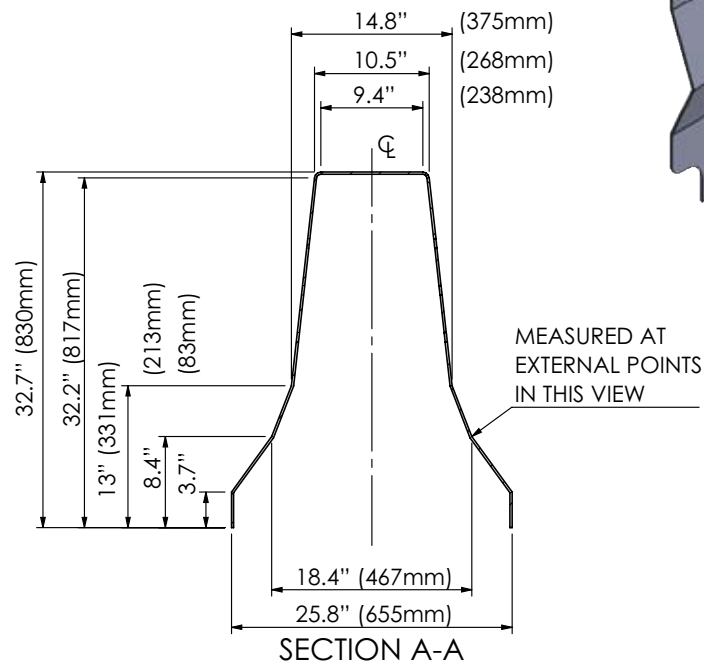
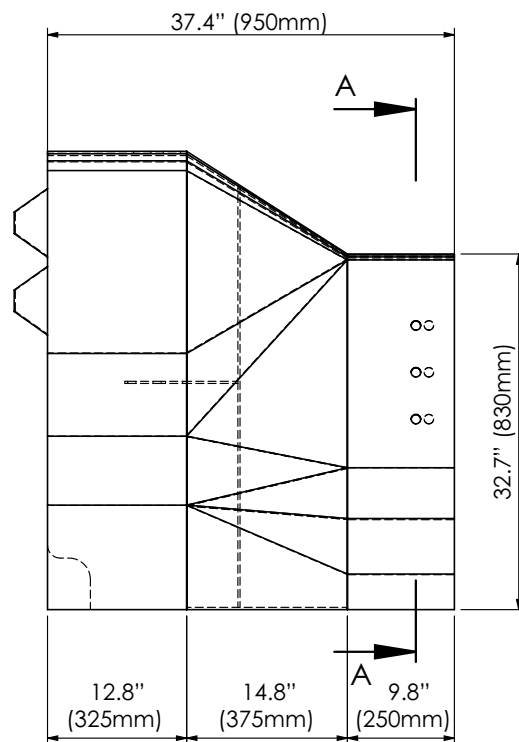
17.2 Single Element Capacity

Liquid Capacity, US Gal (L)	Water Weight, lb (Kg)
184.9 (700 L)	1,543 (946 Kg)

17.3 Anti-Freeze Chemical Companies

The following companies are manufacturers of deicing chemicals. These are just a few examples. These companies or their local distributors should be able to supply further information and options for your application.

- Dow Chemical Company
USA or Canada (800)-447-4369
Worldwide (989)-832-1466
www.dow.com
- Cargill Salt
(888)-385-7258
Highway and Specialty Deicing Customer Service (800)-600-7258
www.cargillsalt.com
- Cryotech Deicing Technology
Main Office and Plant – Iowa (800)-346-7237
www.cryotech.com



REV	DESCRIPTION	APPD	DATE
0	ORINGINAL ISSUED - 01.02-2023		

valmont 

HIGHWAY

Valmont Highway Technology

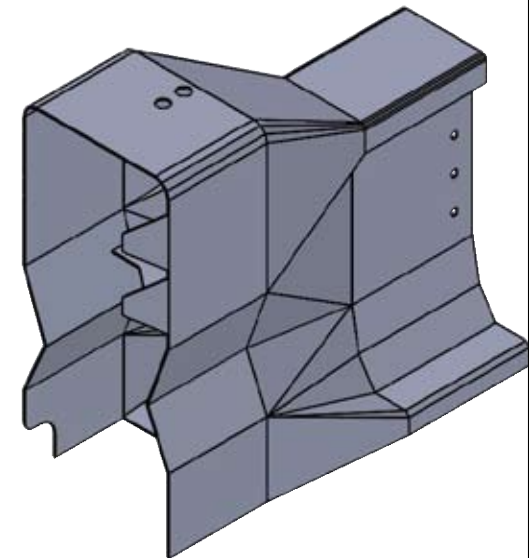
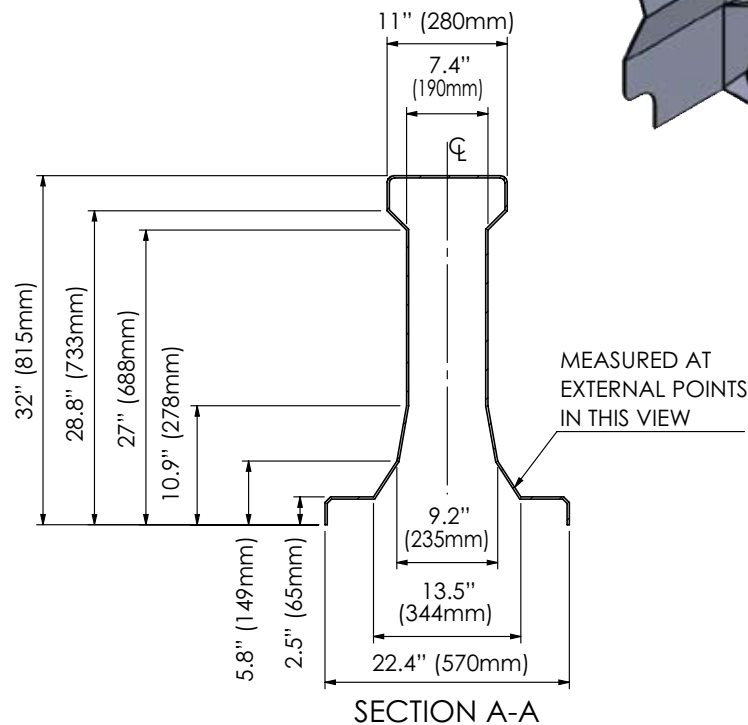
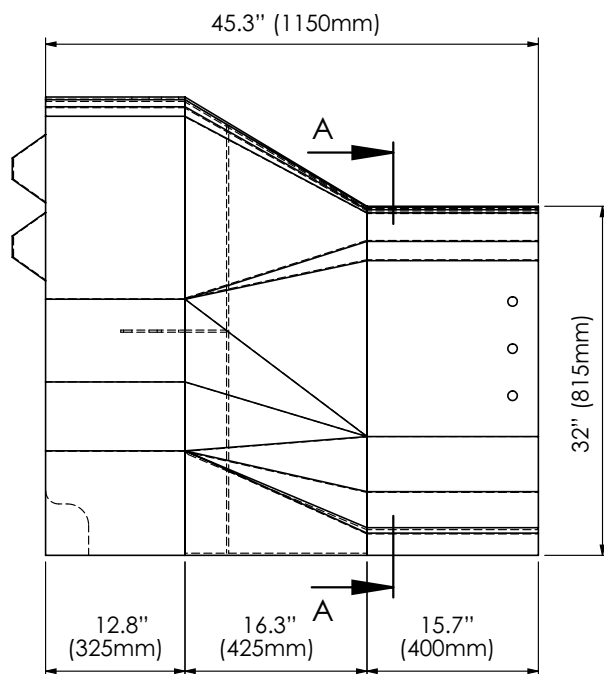
Level 3, Building A, 11 Talavera Road
Macquarie Park, NSW 2113, Australia
T: +612 9814 1777 www.valmonthighway.com

TOLERANCES
Whole Numbers :
One Decimal Place :
Bend Angle :
Straightness :
Scale: 1:15

CLIENT
MATERIAL
5mm BMT G250
FINISH

ITEM
ARMORBUFFA TRANSITION
F-TYPE CONCRETE
DRAWING NUMBER
10200320
DRAWN
KZ
CHECKED
JA
APPROVED
JA

FOLDEF:\Engineering\3. CURRENT DRAWINGS\COMPONENT DRAWINGS\SLDDRWs\Solid Model\ArmorBuffa - Concrete kit - BG800 - Highway Guard\1_Current Model\Model Fit



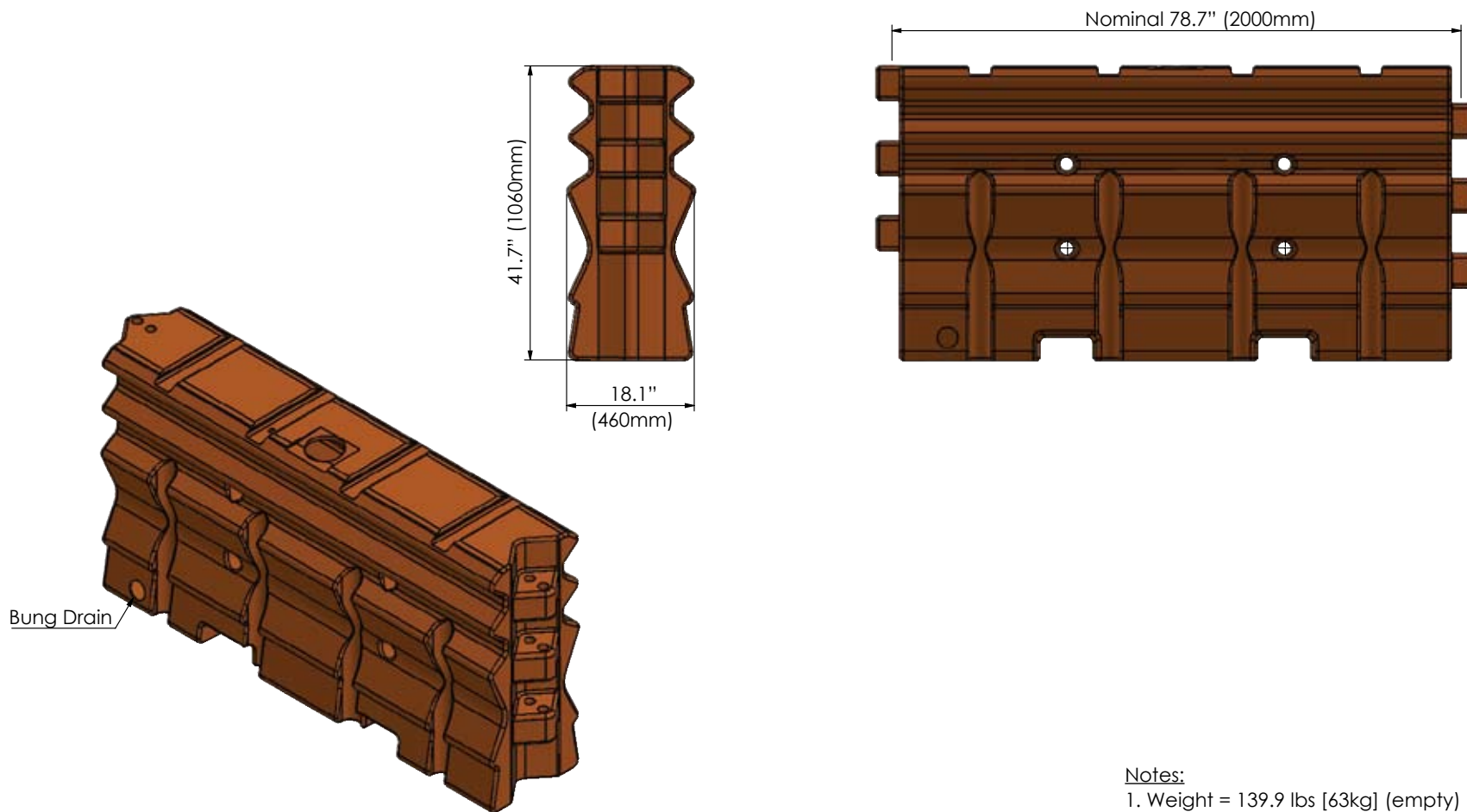
0	ORIGINAL ISSUED - 01.02.2023		
REV	DESCRIPTION	APPD	DATE

valmont 
HIGHWAY
Valmont Highway Technology
Level 3, Building A, 11 Talavera Road
Macquarie Park, NSW 2113, Australia
T: +612 9814 1777 www.valmonthighway.com

TOLERANCES
Whole Numbers :
One Decimal Place :
Bend Angle :
Straightness :
Scale: 1:15


CLIENT
MATERIAL
5mm BMT G250
FINISH
HDGALV

ITEM
**ARMORBUFFA TRANSITION
- HIGHWAY GUARD**
DRAWING NUMBER
10200343
DRAWN KZ
CHECKED JA
APPROVED JA

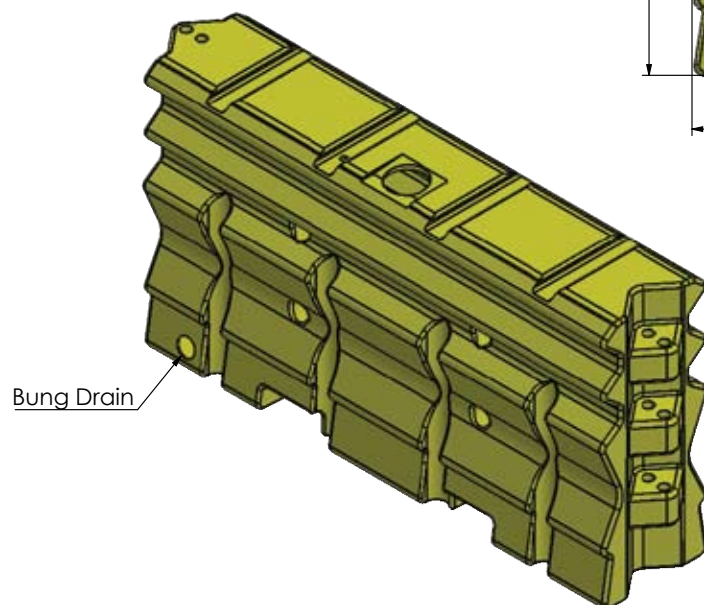
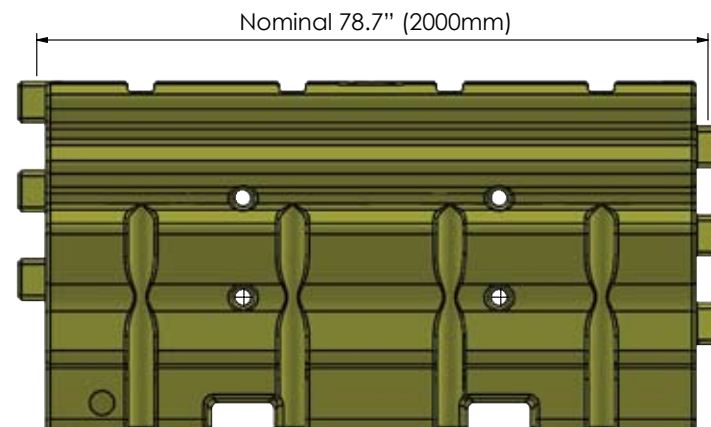
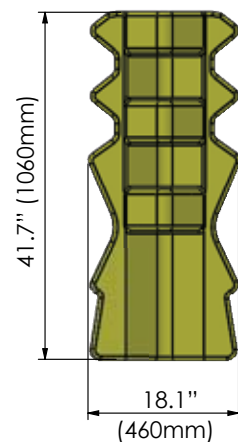


Notes:

1. Weight = 139.9 lbs [63kg] (empty)
= 1682.1 lbs [763kg] (full)
2. Water per unit = 184.9 US Gallons (700 litres)

				<div><div><div>valmont</div><div></div><div>HIGHWAY</div></div><div>Valmont Highway Technology</div><div>Level 3, Building A, 11 Talavera Road</div><div>Macquarie Park, NSW 2113, Australia</div><div>T: +612 9814 1777 www.valmonthighway.com</div></div>	TOLERANCES	CLIENT	ITEM		
					ArmorBuffa Element Orange				
					Whole Numbers :	MATERIAL	DRAWING NUMBER		
					One Decimal Place :		10200322		
					Bend Angle :	FINISH	DRAWN	CHECKED	APPROVED
					Straightness :		VB	JA	LB
1	Notes added, bung drain added.	JA	02/11/20		Scale:				
REV	DESCRIPTION	APPD	DATE						

FOLD#:\Engineering\3. CURRENT DRAWINGS\COMPONENT DRAWINGS\SLDDRWs\10200322 - ArmorBuffa Element - Orange\

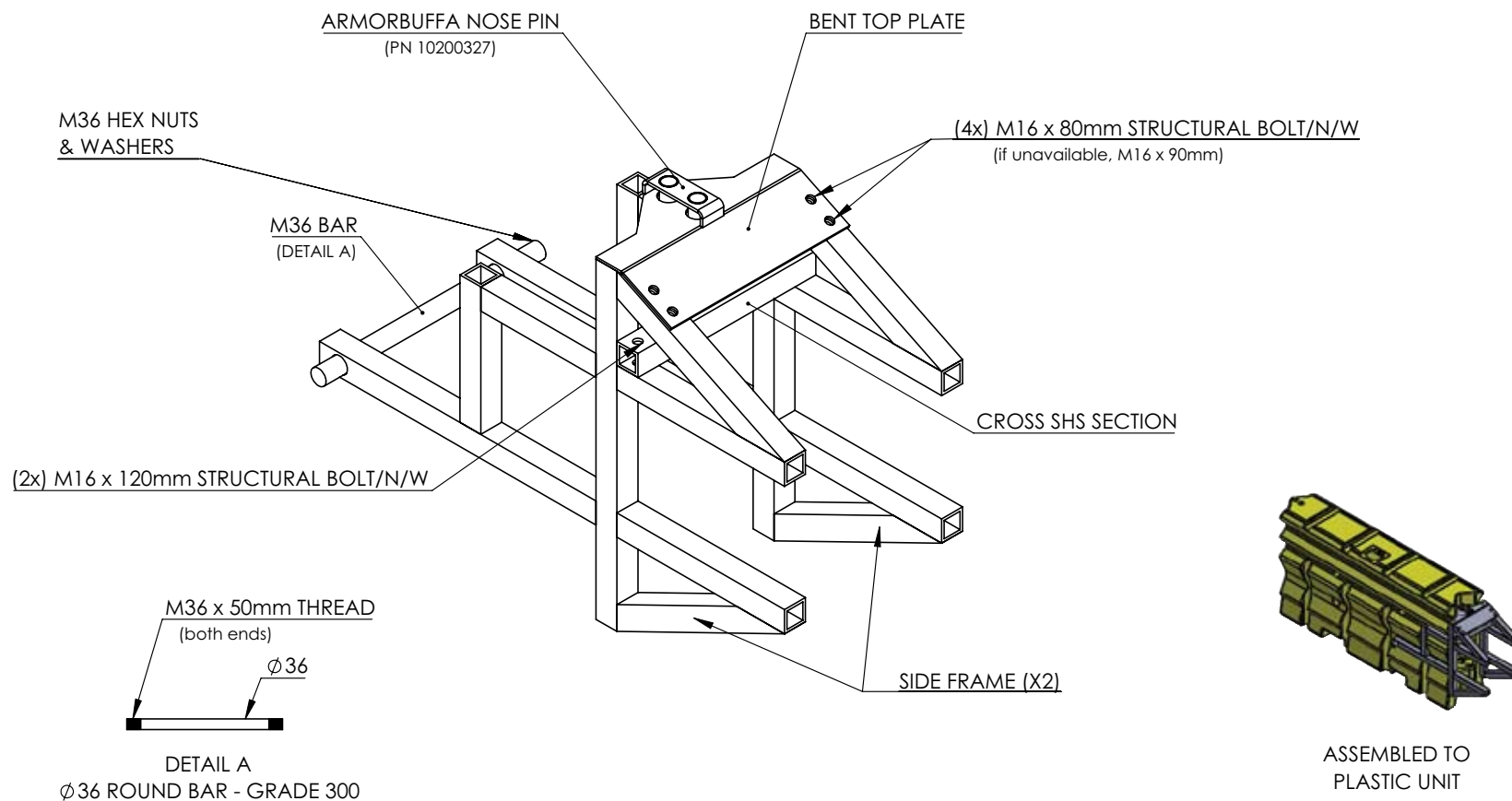



Notes:

1. Weight = 110.2 lbs [50kg] (empty)
= 1653.5 lbs [750kg] (full)
2. Water per unit = 184.9 US Gallons (700 litres)

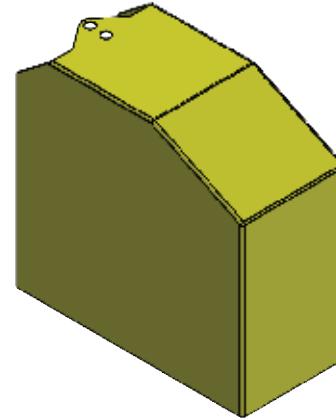
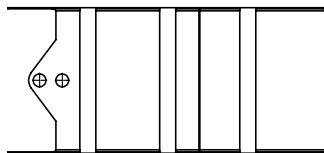
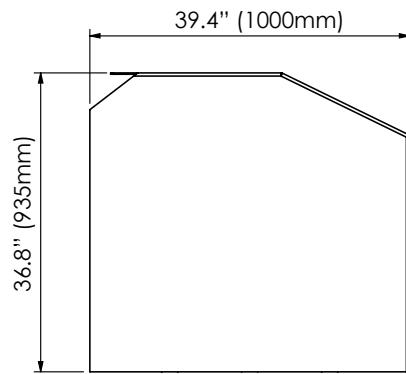
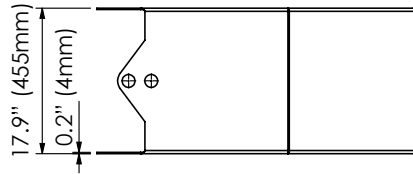
					<div><div><div><div><div><div></div><div>valmont</div></div><div><div></div><div></div><div></div></div></div><div><div></div><div>HIGHWAY</div></div><div>Valmont Highway Technology</div><div>Level 3, Building A, 11 Talavera Road Macquarie Park, NSW 2113, Australia</div><div>T: +612 9814 1777 www.valmonthighway.com</div></div></div></div>	TOLERANCES		CLIENT		ITEM ArmorBuffa Element Yellow		
						Whole Numbers :		MATERIAL		DRAWING NUMBER 10200323		
						One Decimal Place :						
						Bend Angle :		FINISH		DRAWN		
						Straightness :				CHECKED		
						Scale:				APPROVED		
1	Notes updated, bung drain added.		JA	02/11/20					VB		JA	
REV	DESCRIPTION		APPD	DATE							LB	

FOLDER: \\Engineering\3. CURRENT DRAWINGS\COMPONENT DRAWINGS\SLDDRWs\10200323 - ArmorBuffa Element - Yellow



				<div><div><div>valmont</div><div></div><div>HIGHWAY</div></div><div>Valmont Highway Technology</div><div>Level 3, Building A, 11 Talavera Road</div><div>Macquarie Park, NSW 2113, Australia</div><div>T: +612 9814 1777 www.valmonthighway.com</div></div>	TOLERANCES	CLIENT	ITEM		
					ArmorBuffa Steel Nose Assembly				
					Whole Numbers :	MATERIAL	DRAWING NUMBER		
					One Decimal Place :				
					Bend Angle :	FINISH	10200324		
				Straightness :					
	ORIGINAL ISSUE - 23.10.2020				Scale:	HDGalv	DRAWN	CHECKED	APPROVED
REV	DESCRIPTION	APPD	DATE				VB	JA	LB

FOLDER: Engineering\3. CURRENT DRAWINGS\COMPONENT DRAWINGS\10200324 - ArmorBuffa Steel Nose Assembly\



REV	DESCRIPTION	APPD	DATE
	ORIGINAL ISSUE - 23.10.2020		

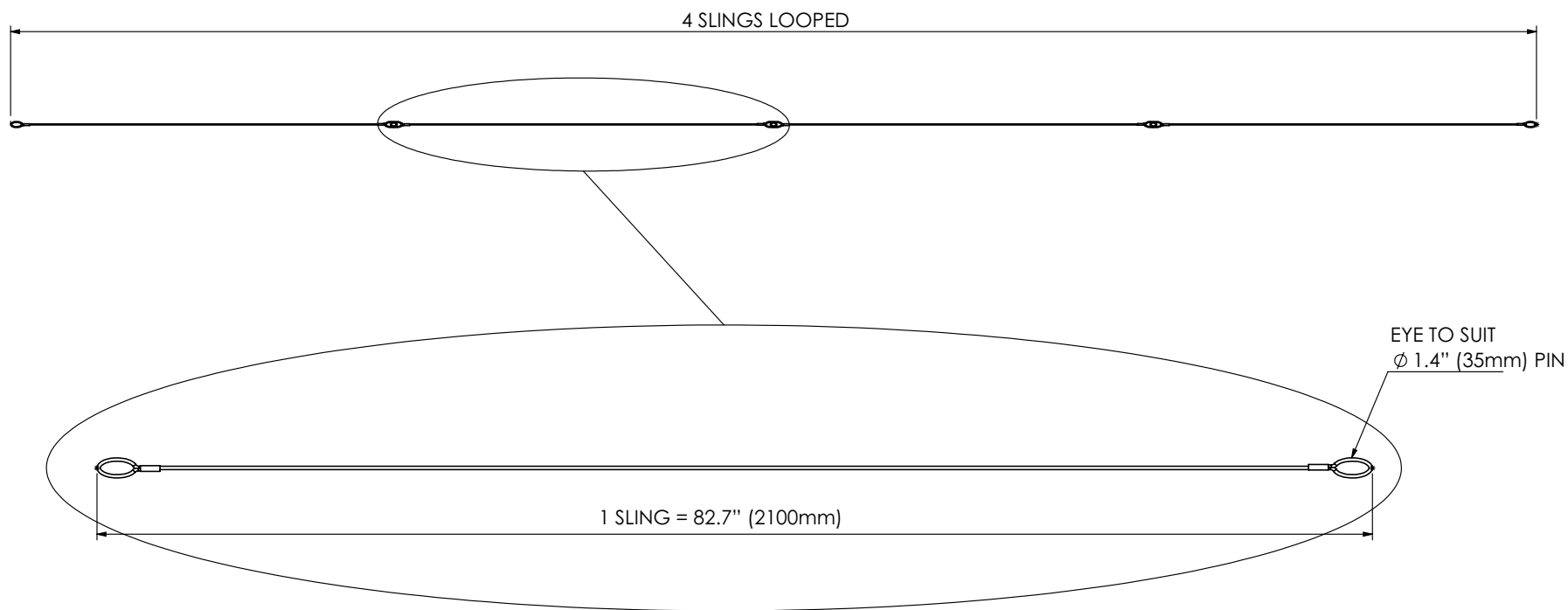
valmont 
HIGHWAY
Valmont Highway Technology
 Level 3, Building A, 11 Talavera Road
 Macquarie Park, NSW 2113, Australia
 T: +612 9814 1777 www.valmonthighway.com

TOLERANCES
Whole Numbers :
One Decimal Place :
Bend Angle :
Straightness :
Scale:


CLIENT
MATERIAL
FINISH

ITEM
ArmorBuffa Nose Cover
DRAWING NUMBER
10200325
DRAWN
VB
CHECKED
JA
APPROVED
LB

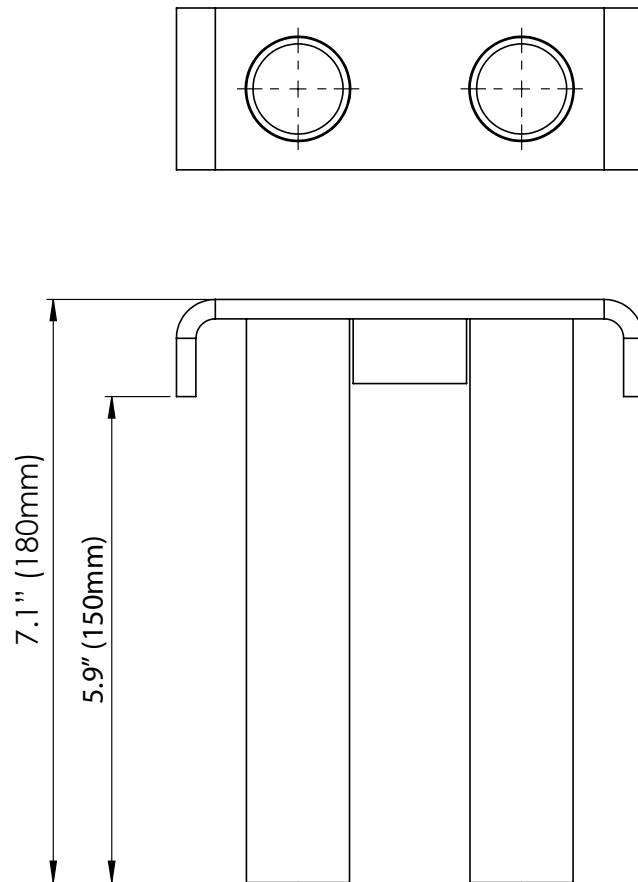
FOLDER: \\Engineering\3. CURRENT DRAWINGS\COMPONENT DRAWINGS\SLDDRWs\10200325 - ArmorBuffa Nose Cover\



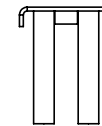
Wire Rope Info:
 Diameter: \varnothing 0.24" (6mm)
 Construction: 7/19 IWRC
 Grade: 2070
 AS 1666.1-2009


				<div><div><div>valmont</div><div></div><div>HIGHWAY</div></div><div>Valmont Highway Technology</div><div>Level 3, Building A, 11 Talavera Road</div><div>Macquarie Park, NSW 2113, Australia</div><div>T: +612 9814 1777 www.valmonthighway.com</div></div>	TOLERANCES	CLIENT	ITEM ArmorBuffa Cable				
					Whole Numbers :						
					One Decimal Place :	MATERIAL	DRAWING NUMBER 10200326				
					Bend Angle :						
					Straightness :	FINISH	DRAWN VB			CHECKED JA	APPROVED LB
	ORIGINAL ISSUE - 26.10.2020 V2 24.01.23				Scale:						
REV	DESCRIPTION	APPD	DATE								

FOI DER F:\Engineering\3 CURRENT DRAWINGS\COMPONENT DRAWINGS\SI DDBW\10200326 - ArmorBuffa Cable

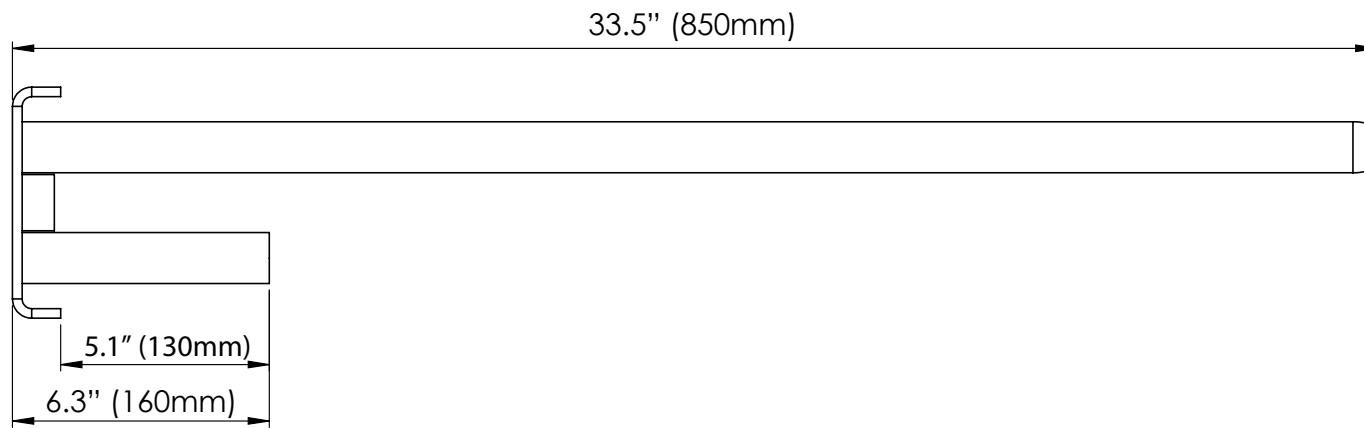
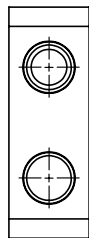


Short 5.9" 150mm
Twin Pin

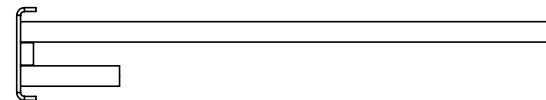



				valmont  Valmont Highway Technology Level 3, Building A, 11 Talavera Road Macquarie Park, NSW 2113, Australia T: +612 9814 1777 www.valmonthighway.com	TOLERANCES Whole Numbers : One Decimal Place : Bend Angle : Straightness : Scale:	CLIENT MATERIAL FINISH	ITEM ArmorBuffa Nose Pin		
							DRAWING NUMBER 10200327		
							DRAWN VB	CHECKED JA	APPROVED LB
REV	DESCRIPTION	APPD	DATE						

FOLDER:\Engineering\3. CURRENT DRAWINGS\COMPONENT DRAWINGS\SLDDRWs\10200327 - ArmorBuffa Nose Pin\

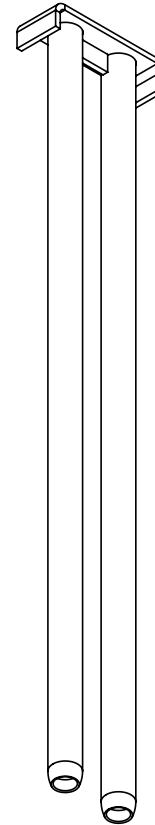
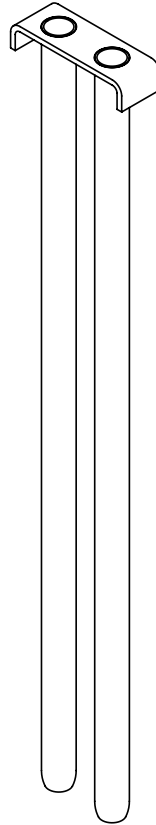
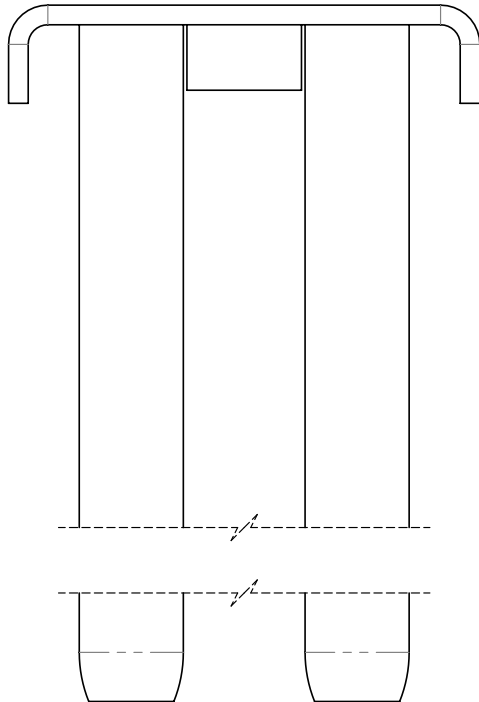
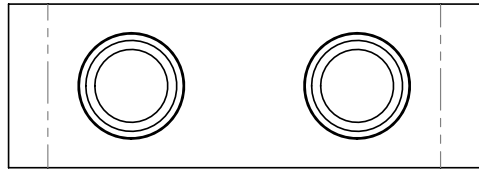


Asymmetric
Twin Pin



				valmont  Valmont Highway Technology Level 3, Building A, 11 Talavera Road Macquarie Park, NSW 2113, Australia T: +612 9814 1777 www.valmonthighway.com	TOLERANCES Whole Numbers : One Decimal Place : Bend Angle : Straightness : Scale:	CLIENT	ITEM		
						MATERIAL	ArmorBuffa Asymmetric Pin		
							DRAWING NUMBER		
						FINISH	10200328		
							DRAWN	CHECKED	APPROVED
REV	DESCRIPTION	APPD	DATE				VB	JA	LB

FOLDER:\Engineering\3. CURRENT DRAWINGS\COMPONENT DRAWINGS\SLDDRWs\10200328 - ArmorBuffa Asymmetric Pin



NOTE:
HOT DIP GALVANIZED

The information heron is
proprietary to Valmont Highway
Distribution Ltd.and shall not be
disclosed,duplicated or used
otherwise without the express
written approval of Valmont
Highway Distribution Ltd.

© 2014 Valmont Highway Distribution Ltd.

REV.	CHANGES	DATE
2	ADD SPACER	17/03/2016
1	INITIAL ISSUE	28/03/2012

SCALE: 1:2		
	DATE	INIT.
DRAWN BY	17/03/2016	LW
APPR'D BY	17/03/2016	BM

Twin Pin for ArmorZone

valmont  12 Offenhauser Dr East Tamaki New Zealand +64 9 215 5231 info@valmonthighway.com		
SHEET	DRAWING NUMBER	REV.
1 OF 1	10200204	2

NOTES

NOTES



For more complete information on Valtir products and services, visit us on the web at www.valtir.com. Materials and specifications are subject to change without notice. Please contact Valtir to confirm that you are referring to the most current instructions.

WWW.VALTIR.COM
1.888.323.6374